

The logo features a stylized white triangle on the left, with a curved line inside it. To the right of the triangle, the word "ATASAN" is written in a bold, white, sans-serif font.

ATASAN
Product Catalogue

2025



BUILT TO LAST,
DESIGNED TO
PERFORM.



Atasan has been manufacturing hinges at superior quality for household appliances since 1995. By using the latest technologies, the company designs and manufactures hinges at its facility built on an area of 30,000 m² in Sakarya. These hinges that are manufactured with an innovative vision are an important factor allowing the household appliances industry to offer such products that make life simpler. Performing its productions activities under a single roof, the company's annual production capacity is more than 30 million original pieces including every product from tools to springs. The design of these products is planned down to the last detail in terms of robustness and reliability. Highest level of customer satisfaction is aimed by the control of each stage of the production process. Furthermore, continuous product development work carried out in our R&D laboratory. Atasan has the international standard quality and technology achieved by ISO 9001:2015 certification. We also have ISO 14001:2015, ISO 45001:2018 and ISO 27001 Information Security and Management System certifications. We are a member of SEDEX. We are young, highly skilled, inspired people innovating new products to fulfill customer's needs in a most effective way.



INDEX

- 4 Corporate
- 5 Manufacturing
- 6 ERP System and Quality Management
- 7 R&D
- 8 Innovation
- 9 Atasan in the World
- 12 Product Family

Mission

Our mission is to add value to society by prioritizing the happiness of all our stakeholders with a sustainable growth approach.

Vision

To be a pioneer in the industry with a quality and innovative perspective at international scale

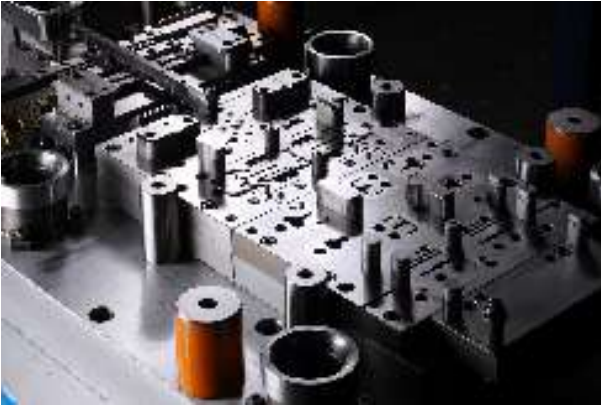
Values

- **Sustainability**
We work according to our sustainability strategy and principles in all our processes.
- **Honesty**
We act in accordance with our business ethics principles in our relations with our business partners inside and outside the company. We communicate transparently, openly and trustfully.
- **Security**
Occupational health and safety is our priority in all our production activities.
- **Customer Orientation**
We keep our customers at the center of all our processes, we respect their rights and value them.
- **Innovation**
We increase the value of our company by developing new investments, ideas, projects and products.
- **Employee Satisfaction**
We add value to our employees and create loyalty by providing new career opportunities.



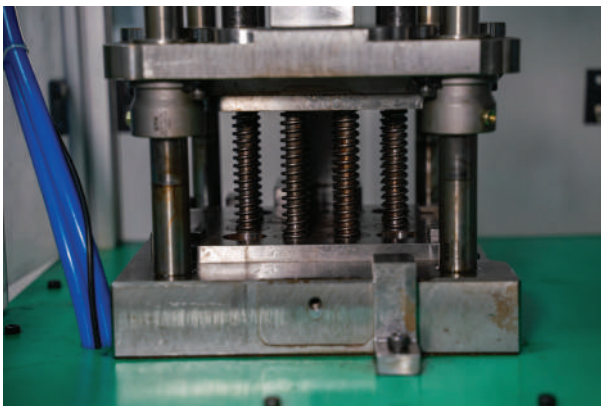
Tool House

Atasan carries out the design and production of all tools of its innovative and state of the art products offered to the household appliances industry. Atasan has its own production facilities and competent staff, performing design and production at the quality.



Spring Production

Also designing and producing springs that are one of the most important elements of hinges, Atasan ensures robustness and durability of its hinges with springs.



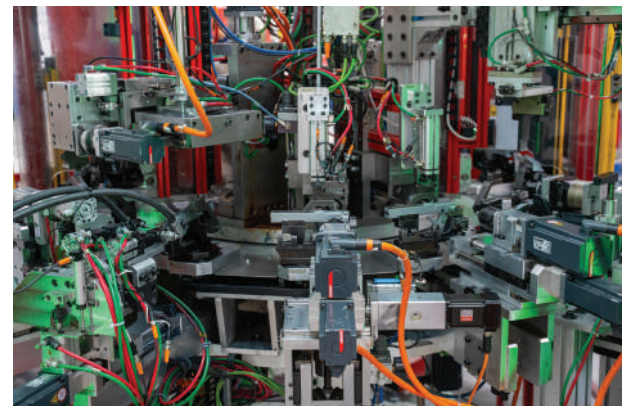
Metal Stamping

At Atasan, progressive tools are pressed in a total of 22 press machines with a weight varying between 60-400 tons, according to the features of the desired part. Thanks to ERP system that is integrated to the PC environment, the Company has built an IT infrastructure, which allows all production monitoring and quality processes to be executed in accordance with lean sigma principles.



Assembly

With its assembly lines operating based on the principles of efficiency and flexibility, Atasan has two separate sections that operate with or semi automation.



ERP System and Quality Management

At Atasan, production and quality and quality management processes that are arranged in accordance with Lean-Sigma principles and improved in time aim at continuous development and high quality.

Process Capability

Using the control charts, it guarantees that the production process is performed within suitable tolerances.



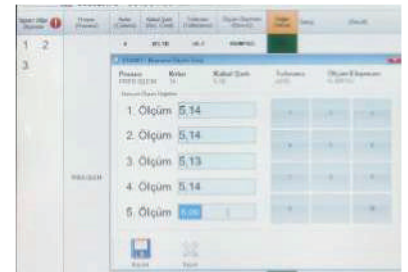
Measurement System Analysis

The efficiency of the measurement system is guaranteed by periodic gage R&R studies.



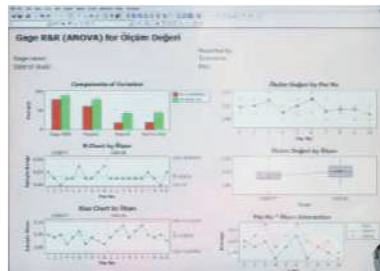
Traceability

The fully integrated ERP System allows for tracing of all parts along the production phases, based on their batch numbers or serial numbers



OEE (Overall Equipment Efficiency)

Efficiency of all kinds of equipment used in production lines is continuously monitored in accordance with OEE principles. Besides each production machine/line is under real-time control through the ERP system.

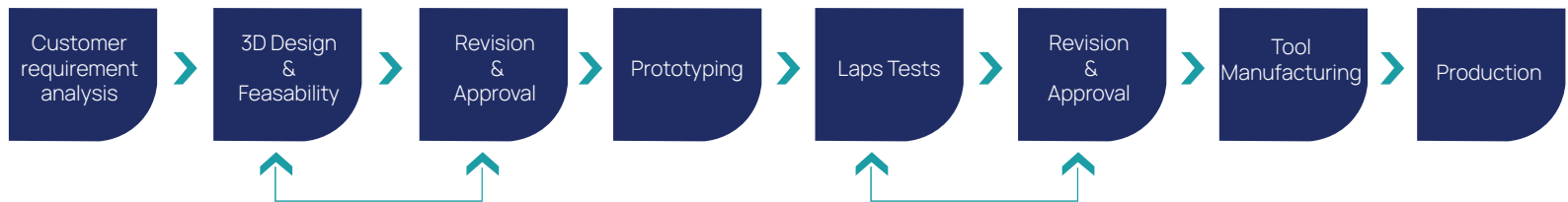


Technical Drawings

Printed drawings are not used. Only the updated and revised versions of all technical drawings are available at the related sections of the ERP system.

Research and Development is of great importance in Atasan. Within 1 or 3 weeks following the customer need analysis, the company prepares the solid model; and produces first prototypes ready for testing within 2-3 weeks following the approval of the design. Such agility and competency constitute the basis for Atasan's ability to successfully make a product within 10-33 weeks ready for transportation.

Agility



- **Closing Force Analysis**

The pressing force which is created on the seal when the door is closed is analyzed and the details of the mechanism are verified.

- **Door Balance Analysis**

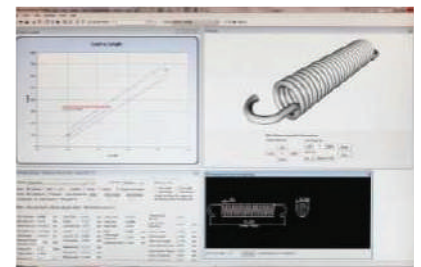
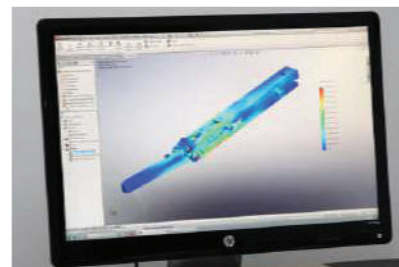
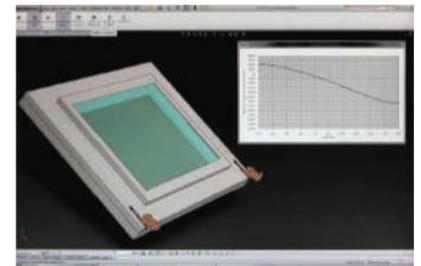
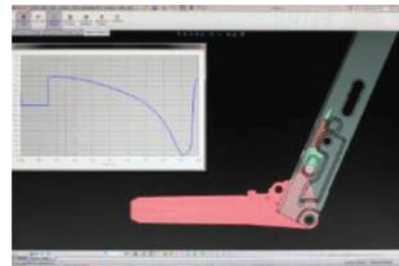
An analysis is made for the spring force, which is required for the door to remain balanced at any point it is left

- **Optimization**

The load that falls on every part is simulated in order to choose the most appropriate material.

- **Spring Design**

All springs used in hinges are designed specially by the R&D unit, based upon the door weight and hinge types. These designs are confirmed using prototypes and then manufactured.



Friction Mechanism

Having passed all required tests, Atasan's patented Friction Mechanism allows door to remain at whatever angle they are left by balancing the doors of any weight, set by customer's desire.



Locking Mechanism

Atasan's patented The Locking Mechanism allows the product to be easily installed on the assembly line.

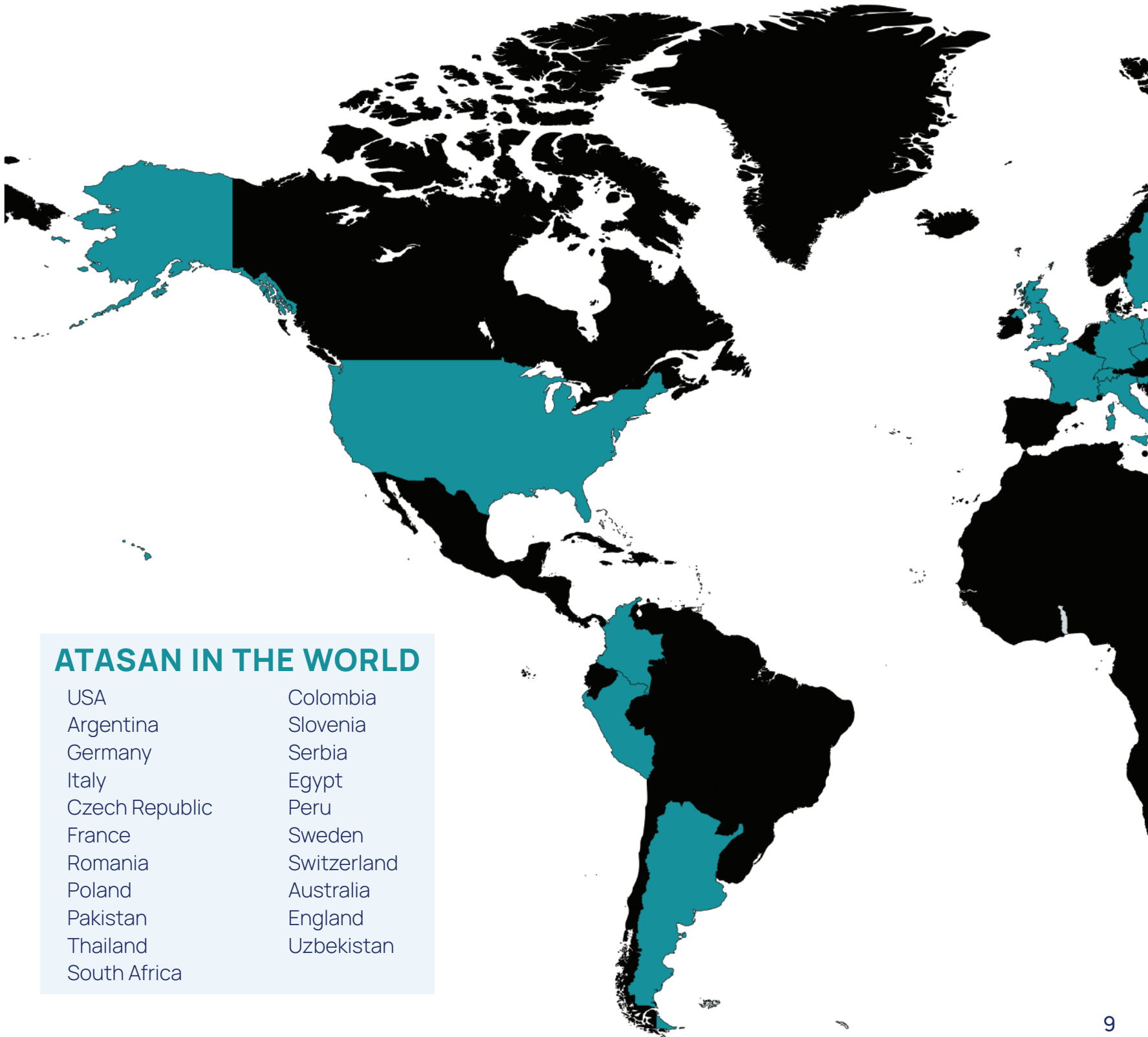


Full Glass Door Surface

Atasan's new hinges allow the inner surfaces of oven doors to be designed from solid glass with no connection nor opening. Solid glass makes life easy for consumers by allowing easy cleaning of ovens.

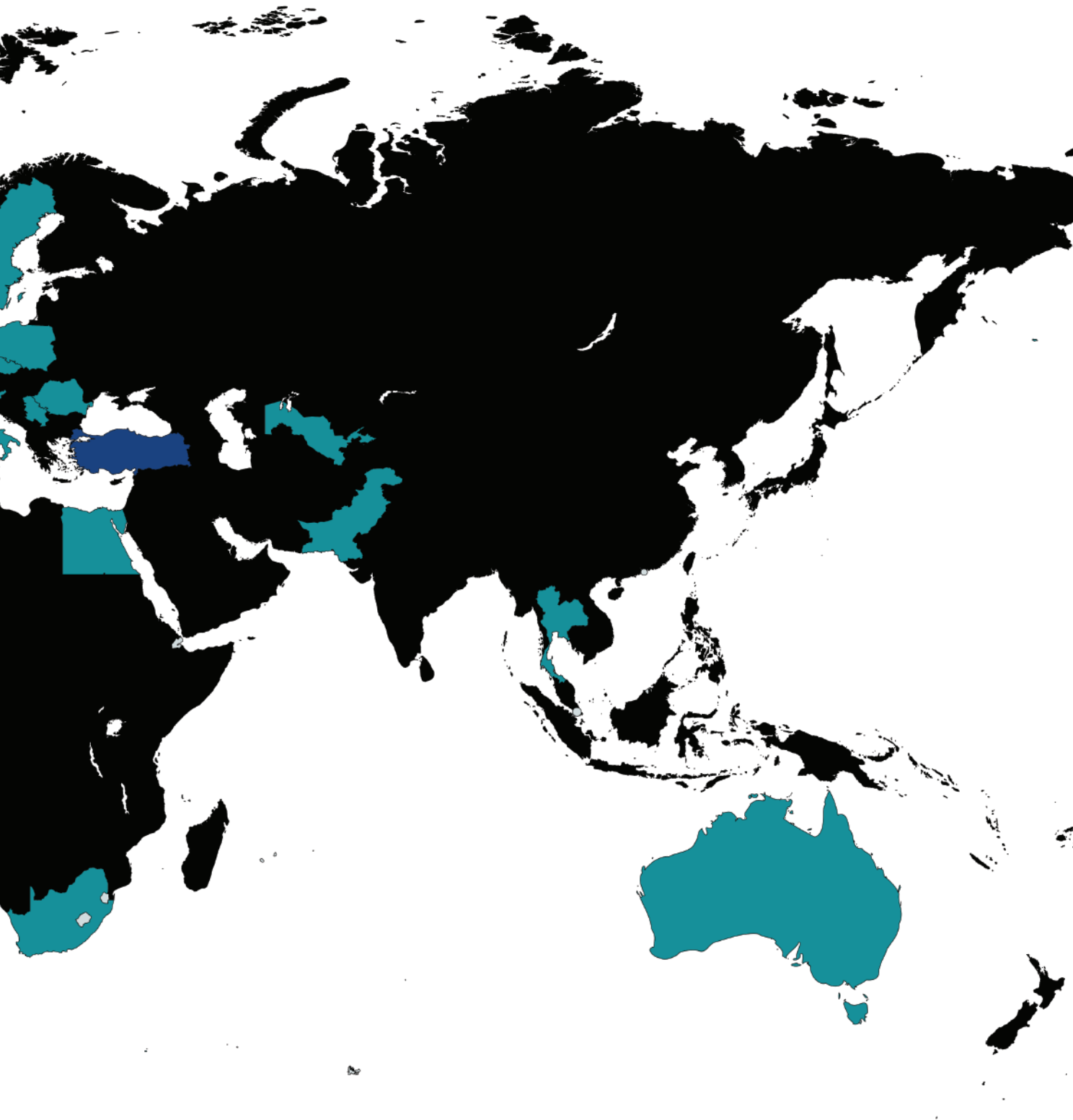
Soft Close & Soft Open Technology

Thanks to the soft close and open technology, Atasan brings the comfort of furniture to ovens by means of the damper, which is placed within the hinge or against the oven door. Independently of how the oven door is pushed, hinges that have the "soft close" mechanism slow down the closing speed of the door, preventing impact. The mechanism can be adjusted according to the desired angle. Making a significant difference in the manufacturing of household appliances, this is a patented innovation offered by Atasan.



ATASAN IN THE WORLD

USA	Colombia
Argentina	Slovenia
Germany	Serbia
Italy	Egypt
Czech Republic	Peru
France	Sweden
Romania	Switzerland
Poland	Australia
Pakistan	England
Thailand	Uzbekistan
South Africa	





Product Family

- **Oven Door Hinges**

- Mod 94
- Mod 94 Long
- K19
- K17
- K21
- K22
- K24

- **Soft Close Oven Door Hinges**

- K23 Short Arm
- K23 Long Arm
- K20
- K21 (Soft Counter)
- K22 (Soft Counter)

- **Light Doors**

- A11
- A12
- A13
- A14

- **Microwave Hinges**

- K19MW

- **Glass & Metal Lid Hinges**

- C11
- C12
- S11

- **Chest Freezer Hinges**

- Mod D15

- **Built-in Refrigerator Hinges**

- Mod B18

- **Integrated Washing Machine Hinges**

- M 21

- **Counter Supports**

- Traditional
- Soft
- Embossed
- K24 Support



OVEN DOOR HINGES

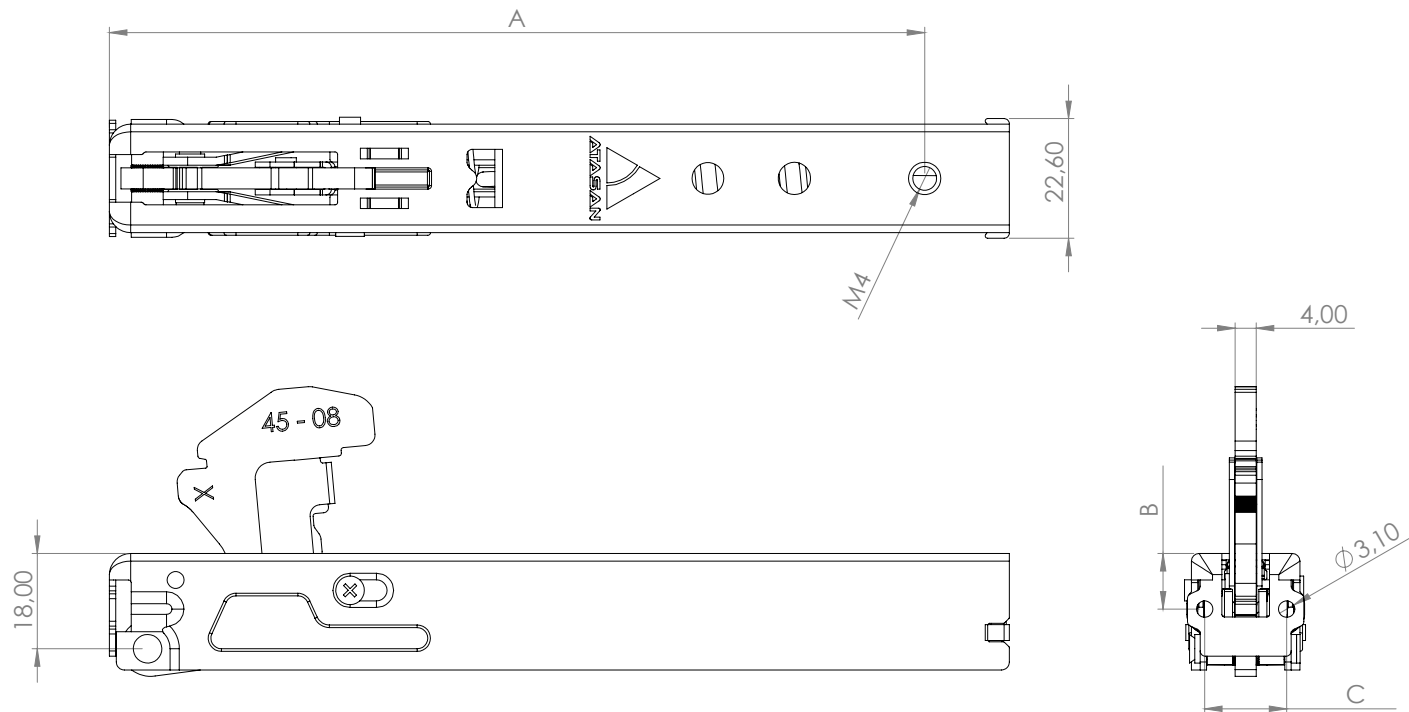
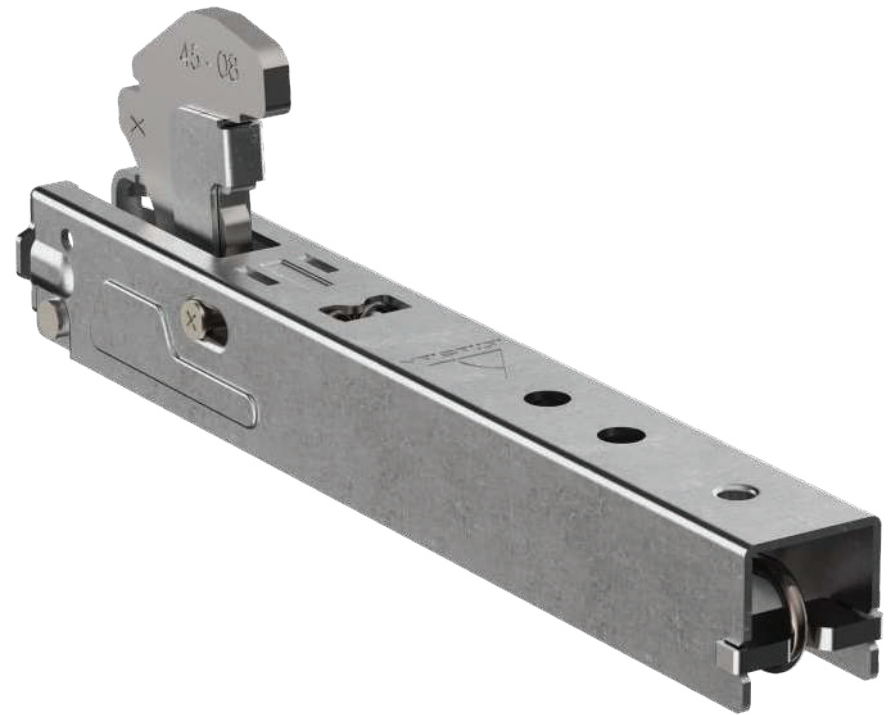


MOD 94

The body placed on the door by Atasan challenges to high expenses often paired by innovative designs. This model is manufactured in a cost efficient manner for classical products.

Specifications

Door Weight	from 2.5 - 9 kg
Life Cycle Test	20.000 cycles
Distance from pivot point to center of gravity	230 mm
Opening angle	86°
Operation Temperature	115°C
Maximum supported static load	25 kg

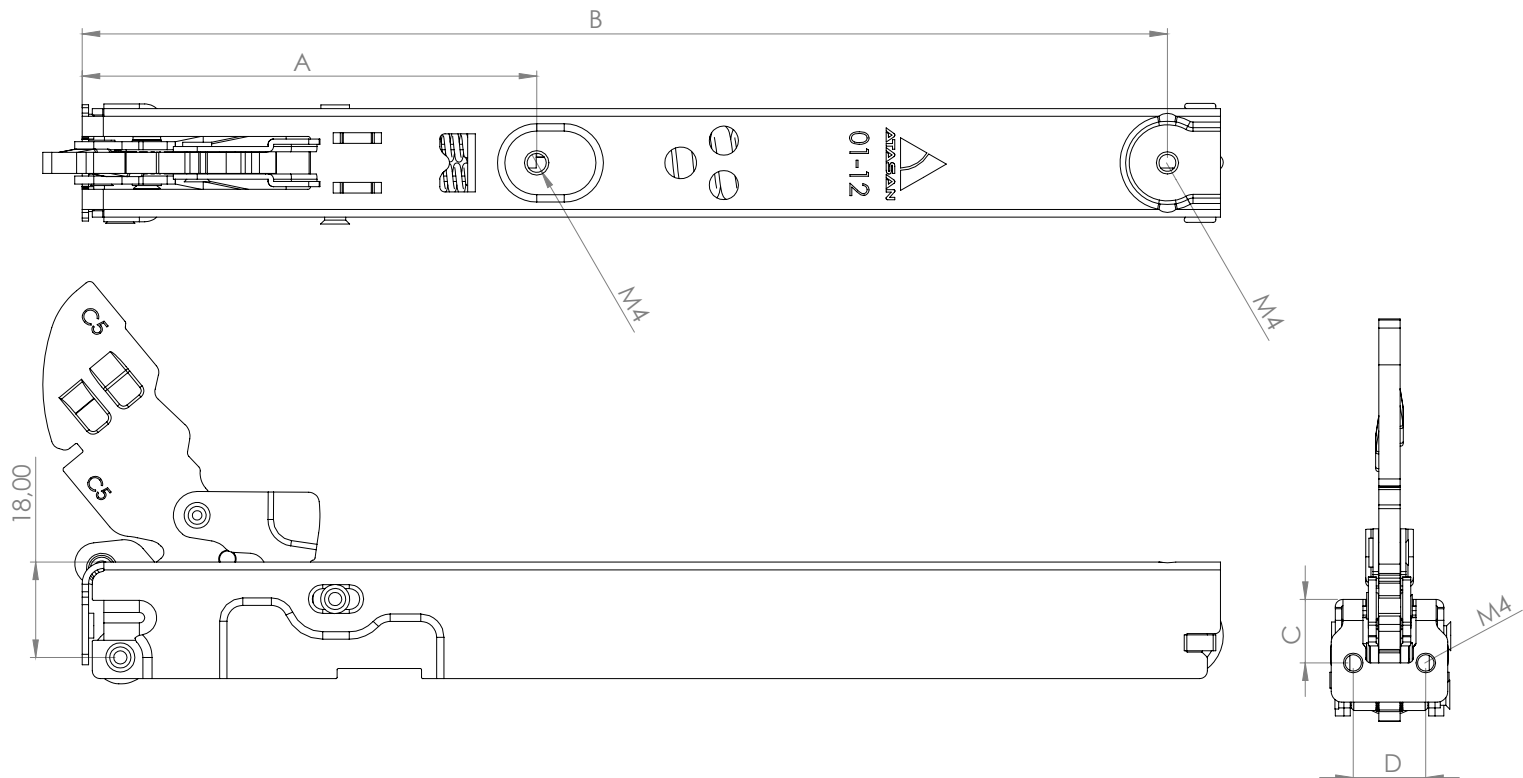


MOD 94 Long

Ovens have various door weights depending on different designs. With the friction system in the Mod 94F type hinge, it has the ability to balance the door in different door weights.

Specifications

Door Weight	from 2.5 - 12 kg
Life Cycle Test	20.000 cycles
Distance from pivot point to center of gravity	230 mm
Opening angle	86°
Operation Temperature	115°C
Maximum supported static load	25 kg

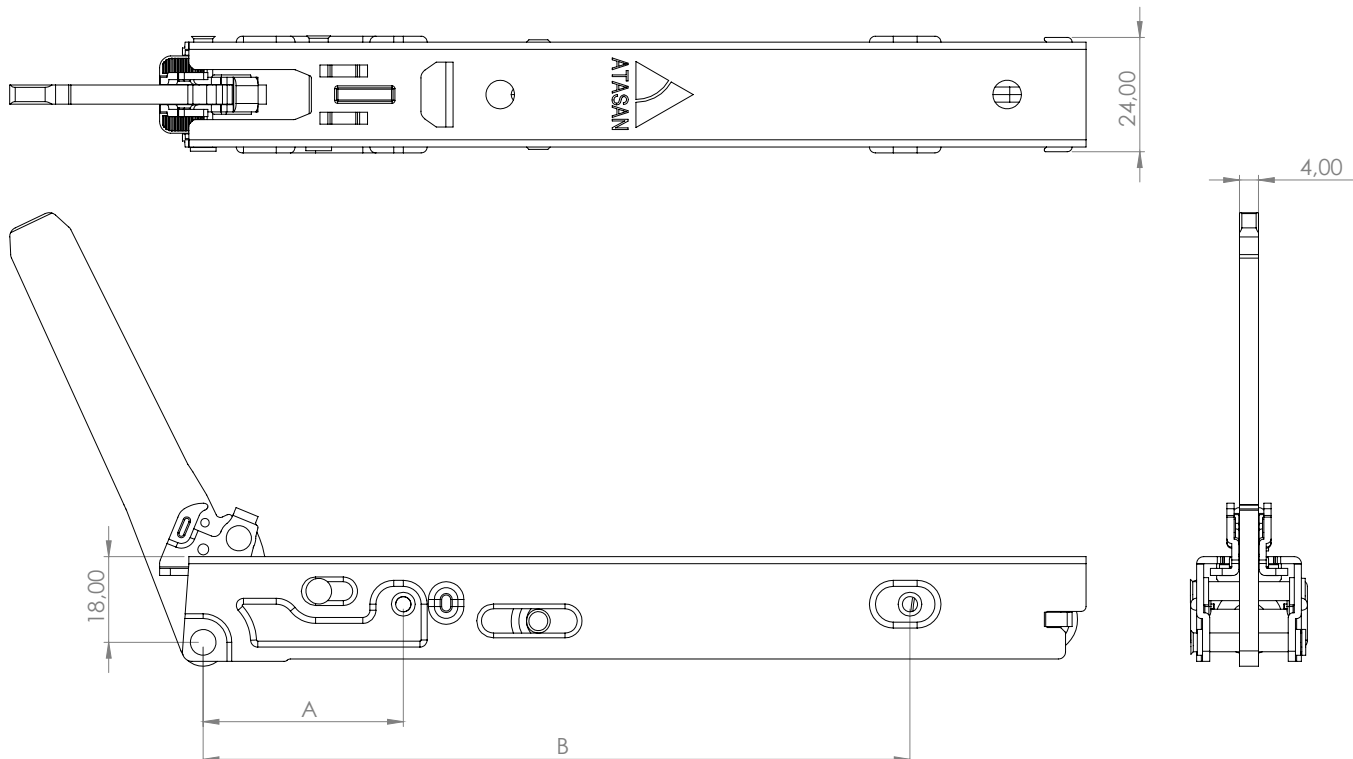


K19

The body of new generation hinges is now on the frame. With this model which is designed from solid glass and in which the “soft close” mechanism is used, Atasan offers an alternative product that combines practicality with a modern style.

Specifications

Door Weight	from 2.5 - 12 kg
Life Cycle Test	20.000 cycles
Distance from pivot point to center of gravity	230 mm
Opening angle	86°
Operation Temperature	115°C
Maximum supported static load	25 kg

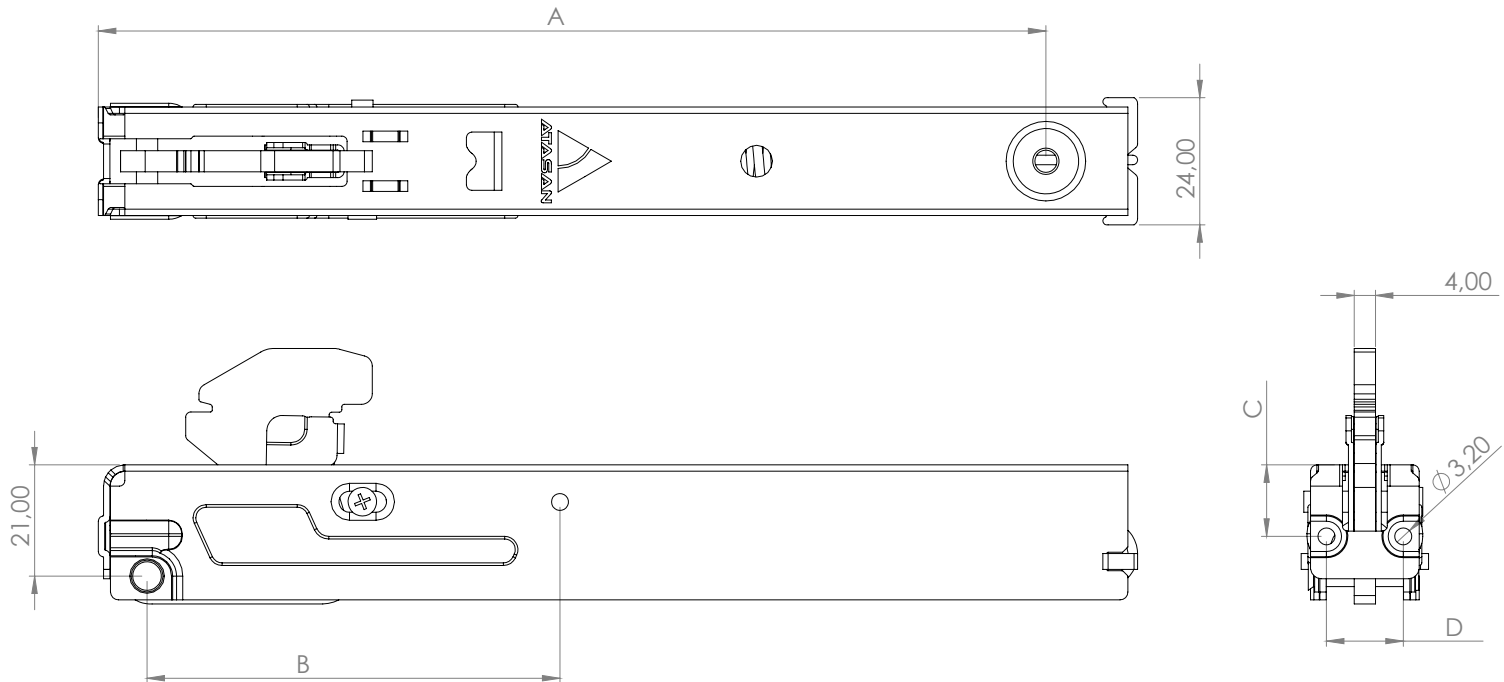


K17

Atasan designs hinges that offer comfort to consumers. With a vision that allows the production of cost-efficient options, the company is able to adapt its innovative technologies to any desired weight.

Specifications

Door Weight	from 2.5 - 12 kg
Life Cycle Test	20.000 cycles
Distance from pivot point to center of gravity	230 mm
Opening angle	86°
Operation Temperature	115°C
Maximum supported static load	25 kg

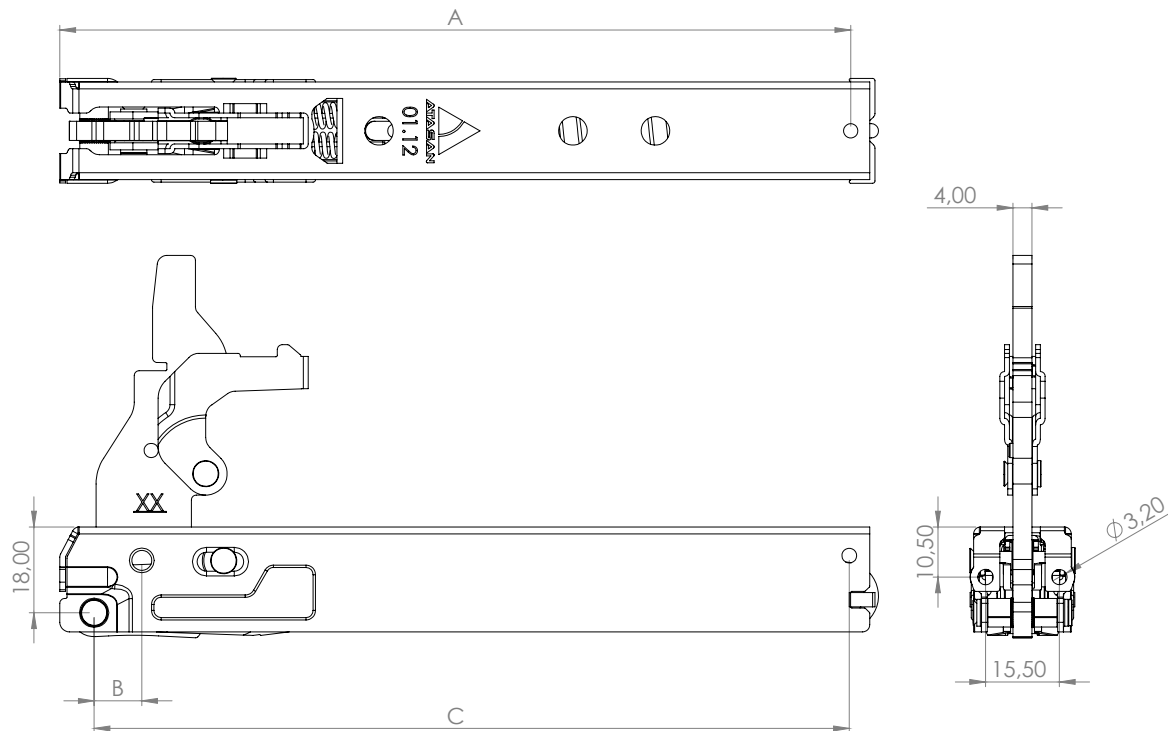


K21

Developed with Atasan's multi-optional design and production approach, the counter support mechanism can be adapted to any hinge type. As one of the special models of the company, this mechanism is the secret behind silently closed doors.

Specifications

Door Weight	from 2.5 - 12 kg
Life Cycle Test	20.000 cycles
Distance from pivot point to center of gravity	230 mm
Opening angle	86°
Operation Temperature	115°C
Maximum supported static load	25 kg

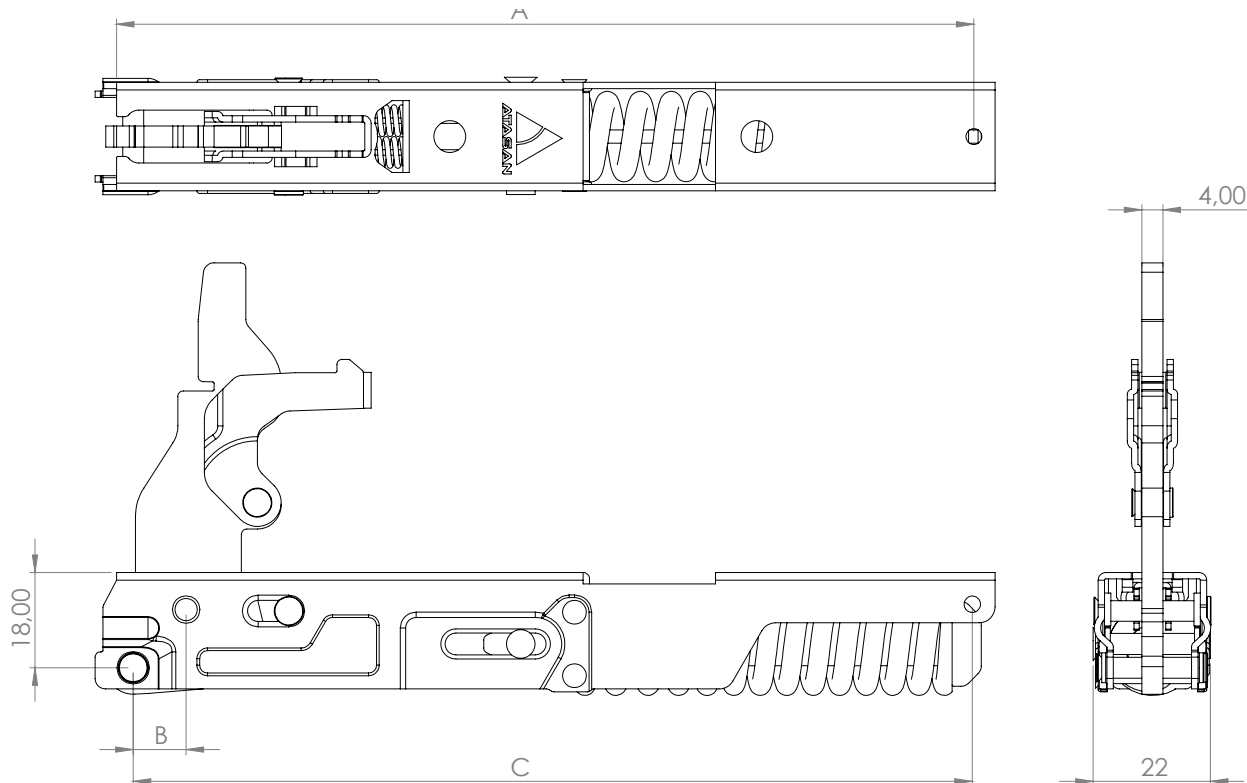
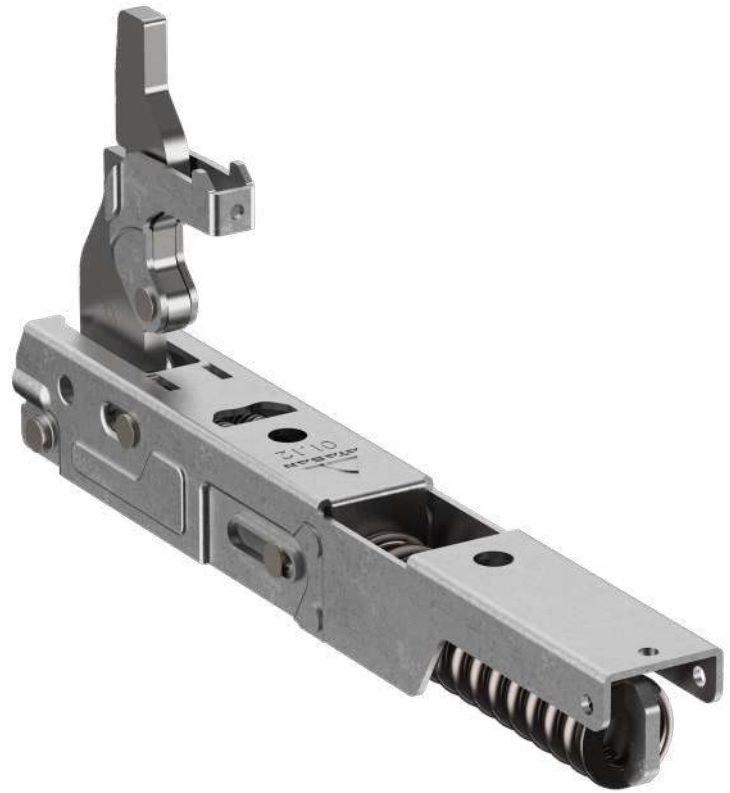


K22

This model meets the needs of heavy doors with its short body and compression spring system.

Specifications

Door Weight	from 2.5 - 12 kg
Life Cycle Test	20.000 cycles
Distance from pivot point to center of gravity	230 mm
Opening angle	86°
Operation Temperature	115°C
Maximum supported static load	25 kg

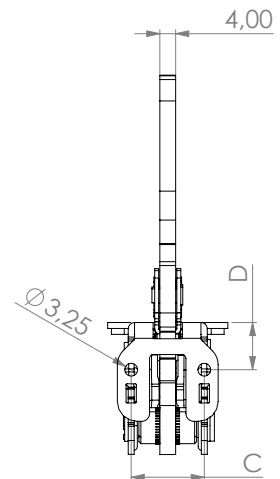
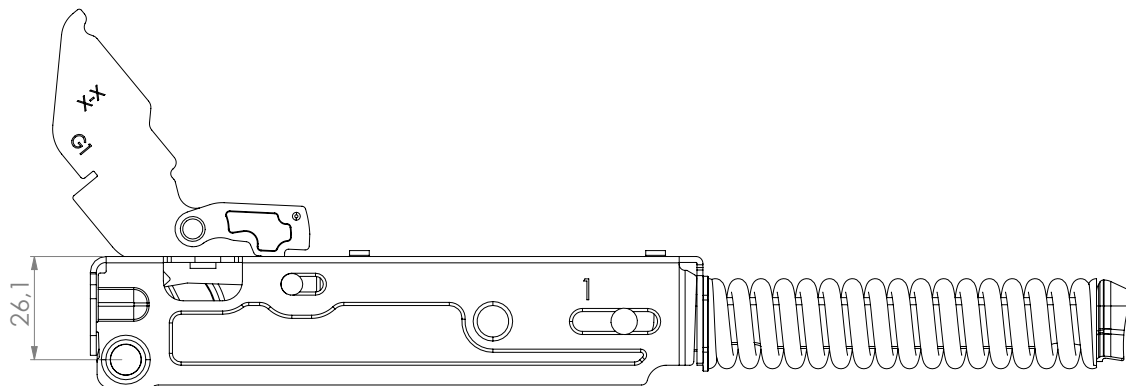
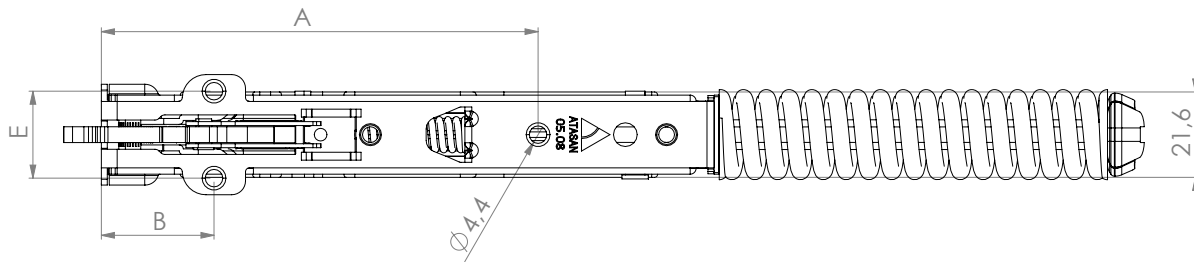


K24

A compact design that combines comfort and performance, manufactured from high-quality materials for standards that require high durability.

Specifications

Door Weight	from 2.5 - 13 kg
Life Cycle Test	40.000 cycles
Distance from pivot point to center of gravity	280 mm
Opening angle	87,5°
Operation Temperature	115°C
Maximum supported static load	45 kg



SOFT CLOSE OVEN DOOR HINGES

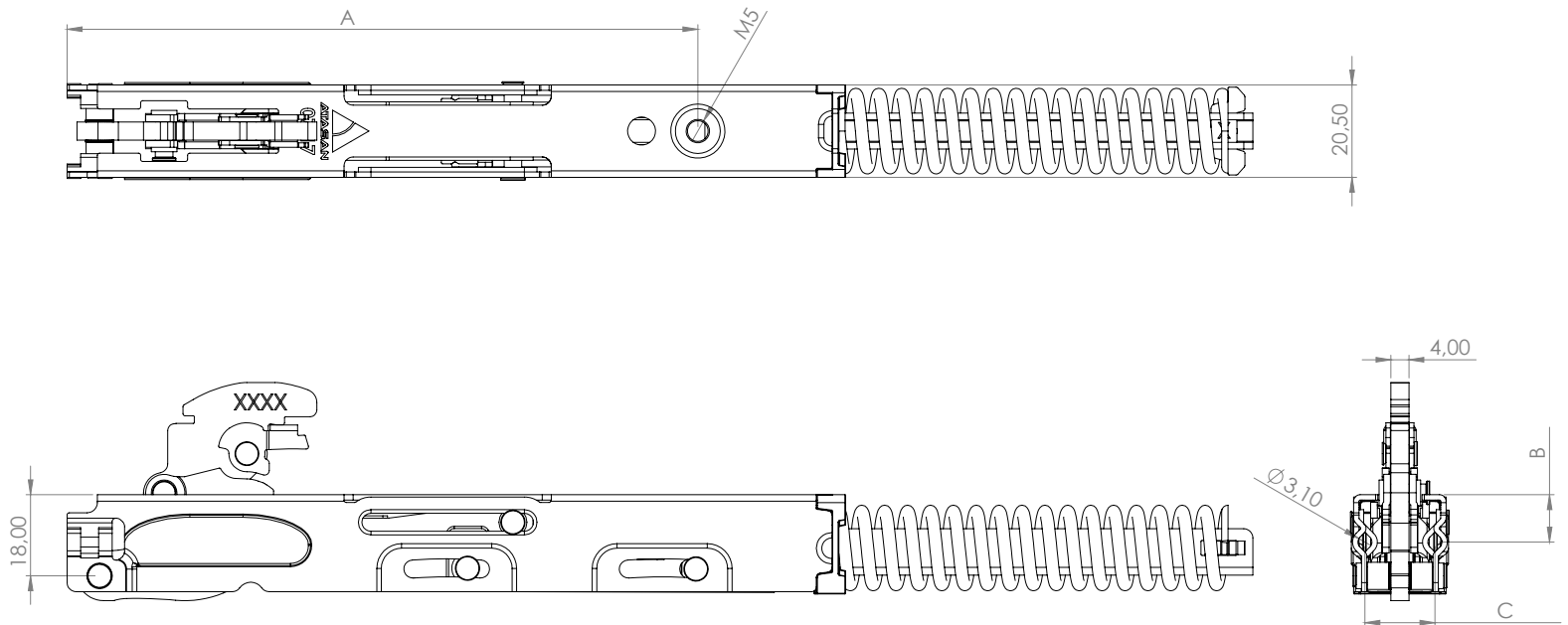


K23 Short Arm

Based on creative research strategies, Atasan has brought the hinge body together with the damper group that provides soft closing on the door in a compact structure.

Specifications

Door Weight	from 2.5 - 12 kg
Life Cycle Test	20.000 cycles
Distance from pivot point to center of gravity	230 mm
Opening angle	86°
Operation Temperature	115°C
Maximum supported static load	25 kg

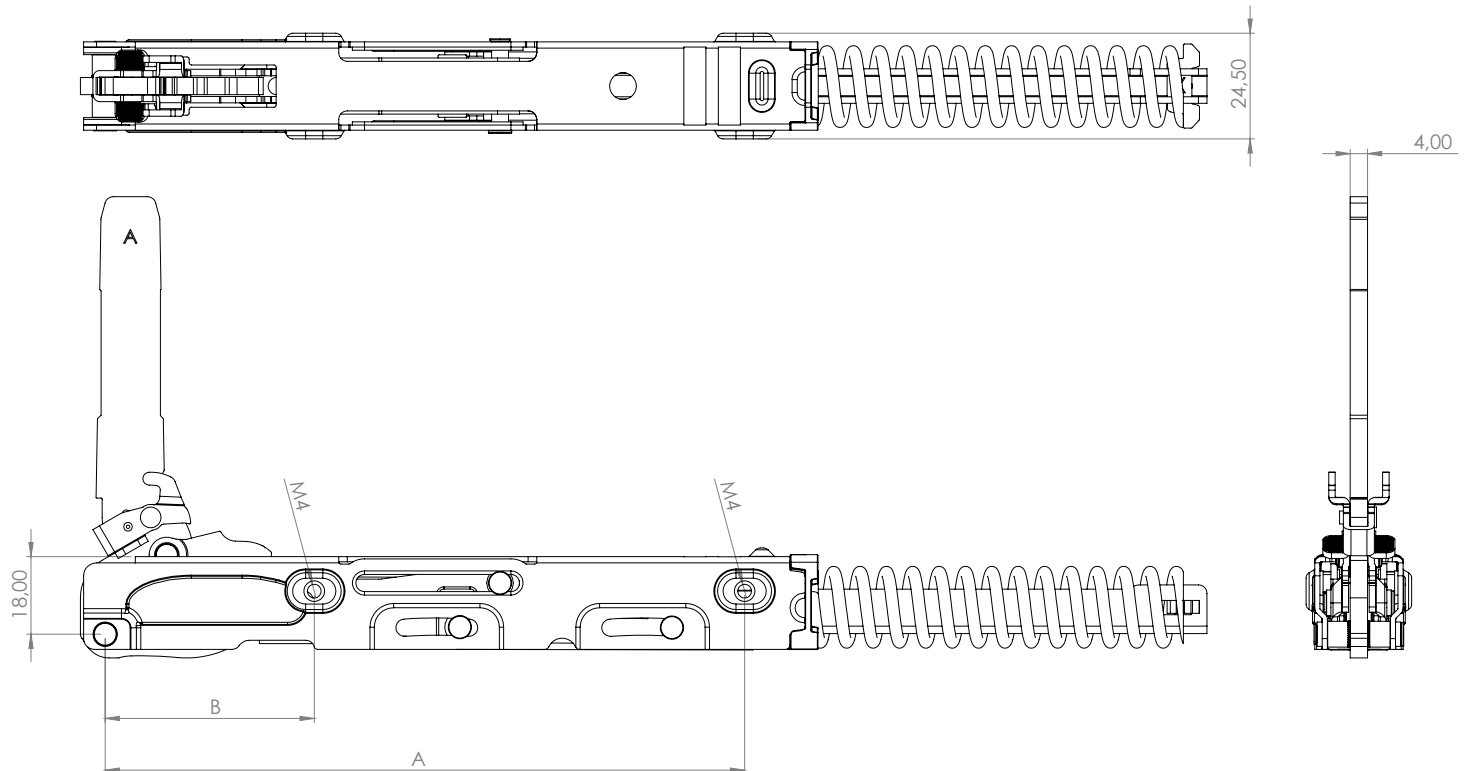


K23 Long Arm

This mechanism provides maximum comfort by offering soft opening and closing together with a single damper group.

Specifications

Door Weight	from 2.5 - 12 kg
Life Cycle Test	20.000 cycles
Distance from pivot point to center of gravity	230 mm
Opening angle	86°
Operation Temperature	115°C
Maximum supported static load	25 kg

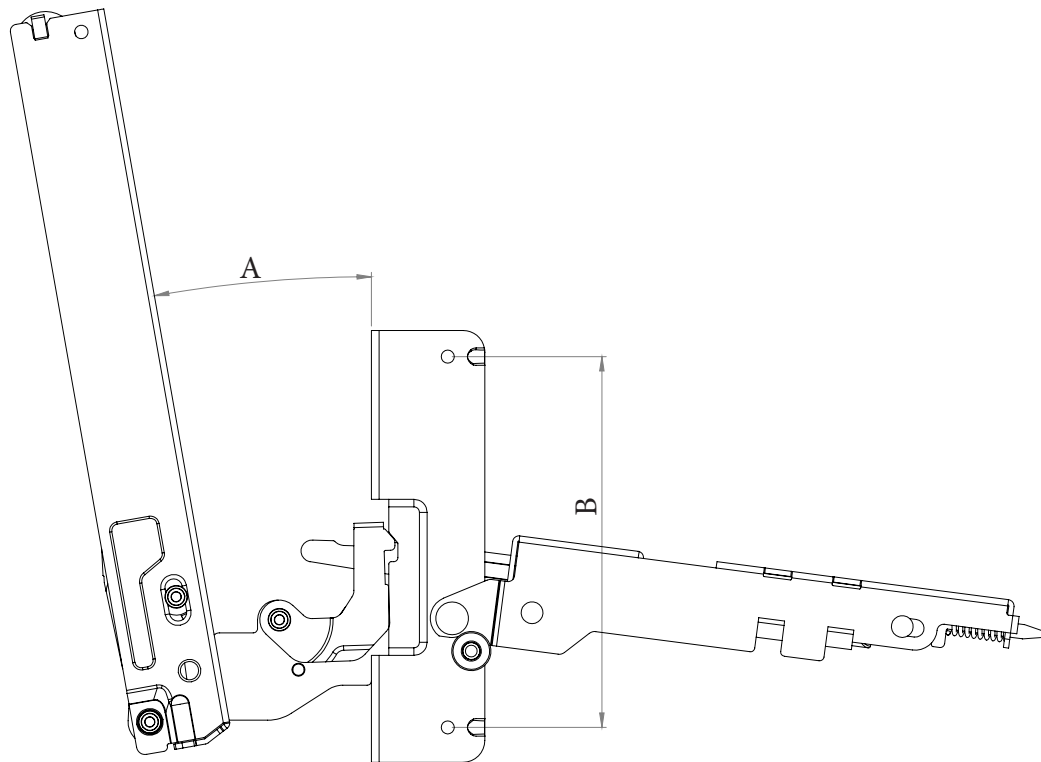


K21 Soft Close

Developed with Atasan's multi-optional design and production approach, the counter support mechanism can be adapted to any hinge type. As one of the special models of the company, this mechanism is the secret behind silently closed doors. Soft hinge receiver provides optional soft closing functionality.

Specifications

Door Weight	from 2.5 - 9 kg
Life Cycle Test	20.000 cycles
Distance from pivot point to center of gravity	230 mm
Opening angle	86°
Operation Temperature	115°C
Maximum supported static load	25 kg

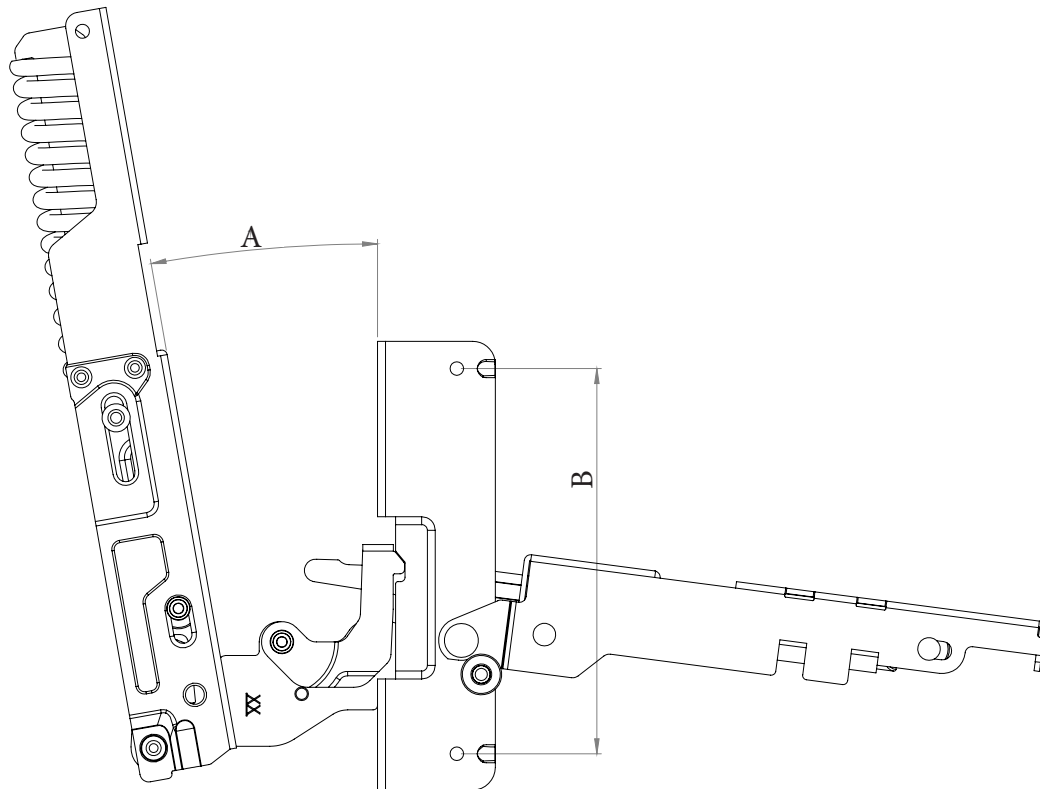


K22 Soft Close

This model meets the needs of heavy doors with its short body and compression spring system. Soft hinge receiver provides optional soft closing functionality.

Specifications

Door Weight	from 2.5 - 12 kg
Life Cycle Test	20.000 cycles
Distance from pivot point to center of gravity	230 mm
Opening angle	86°
Operation Temperature	115°C
Maximum supported static load	25 kg



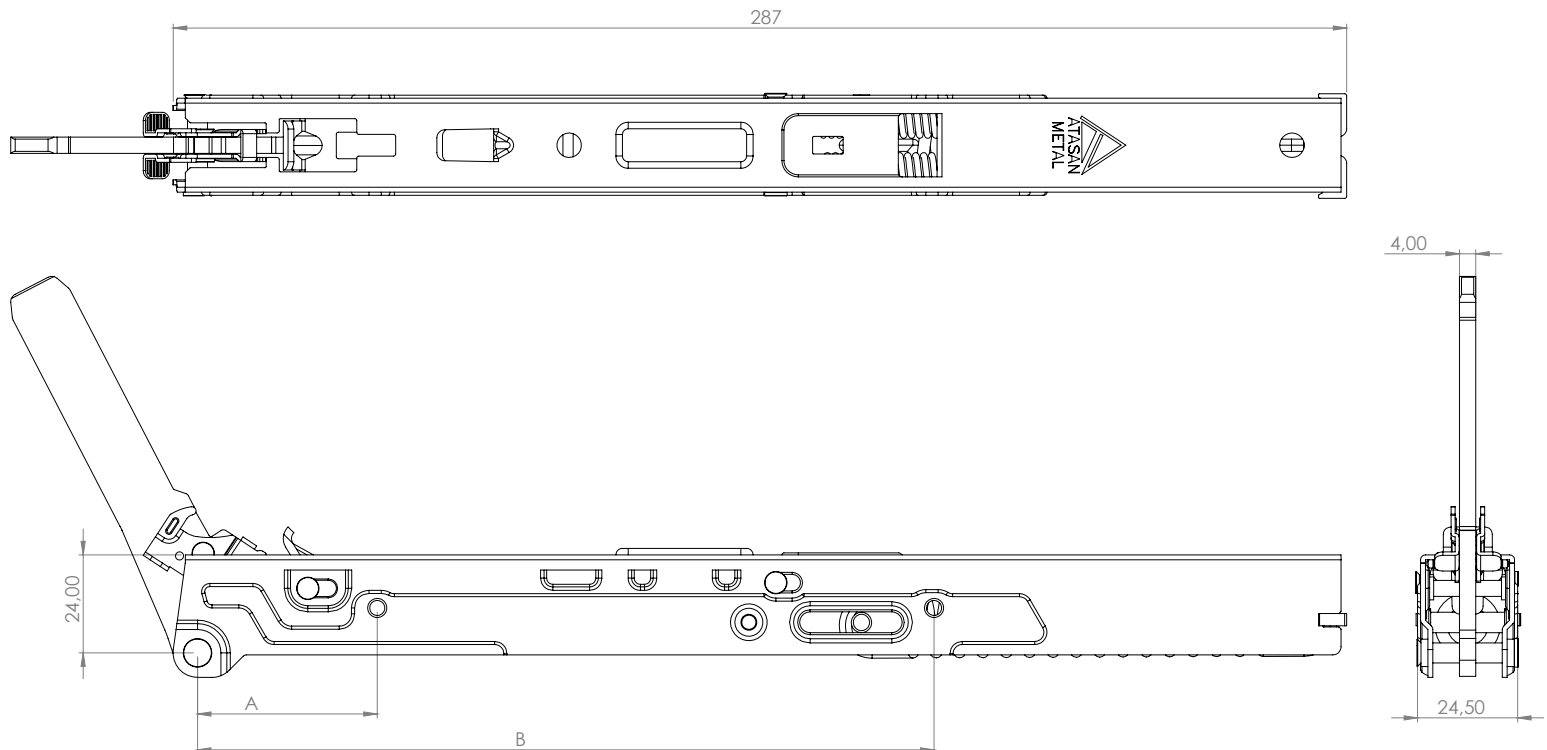
K20 Soft Close

The body of new generation hinges is now on the frame. With this model which is designed from solid glass and in which the "soft close" mechanism is used, Atasan offers an option that combines practicality with a stylish look.



Specifications

Door Weight	from 2.5 - 12 kg
Life Cycle Test	20.000 cycles
Distance from pivot point to center of gravity	230 mm
Opening angle	86°
Operation Temperature	115°C
Maximum supported static load	25 kg



LIGHT DOOR HINGES

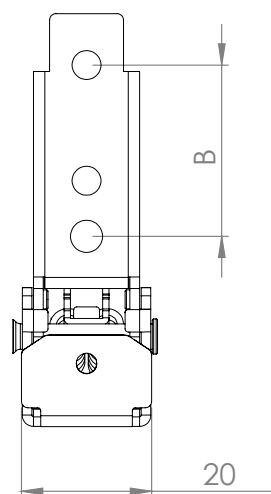
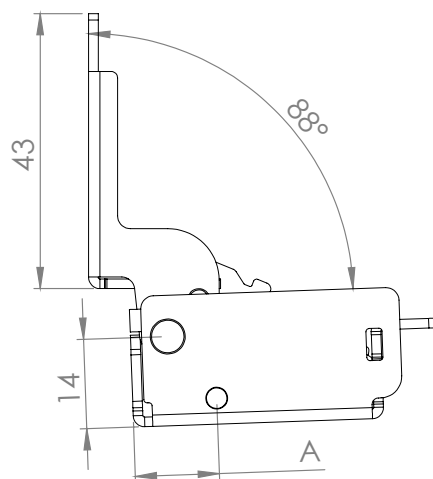
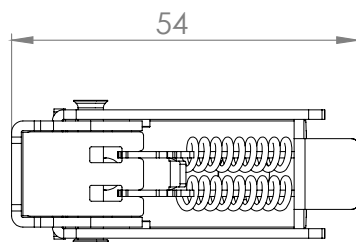


A11

A simple hinge from Atasan's portfolio of special products; this hinge made of sheet metal is for lower doors.

Specifications

Door Weight	from 0,6 - 3 kg
Distance from pivot point to center of gravity	120 mm
Opening angle	88°
Operation Temperature	115°C

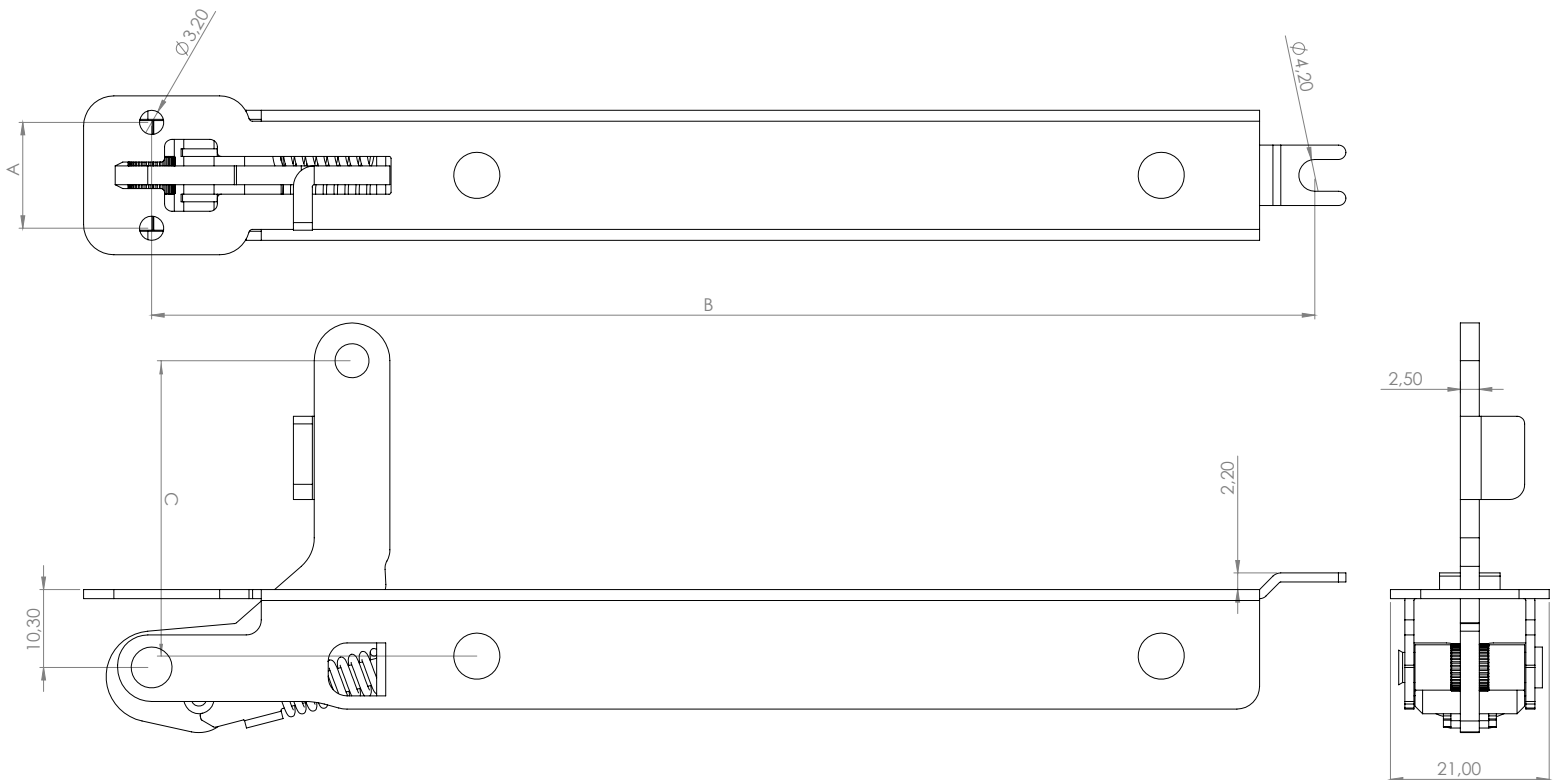
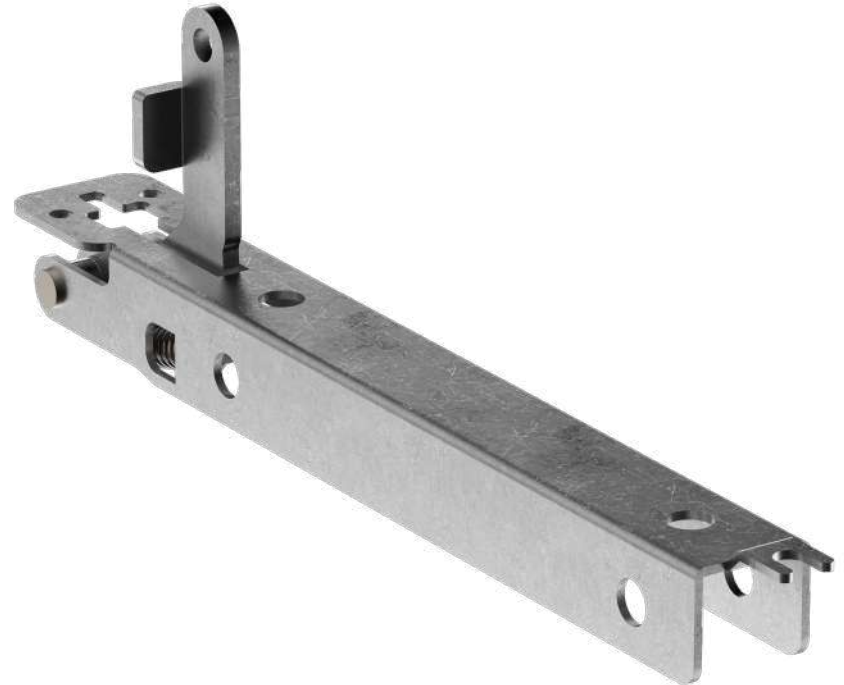


A12

Responding the needs of mini oven doors with its small-sized design also offers a lowcost solution.

Specifications

Door Weight	from 0,6 - 3 kg
Distance from pivot point to center of gravity	120 mm
Opening angle	86°
Operation Temperature	115°C

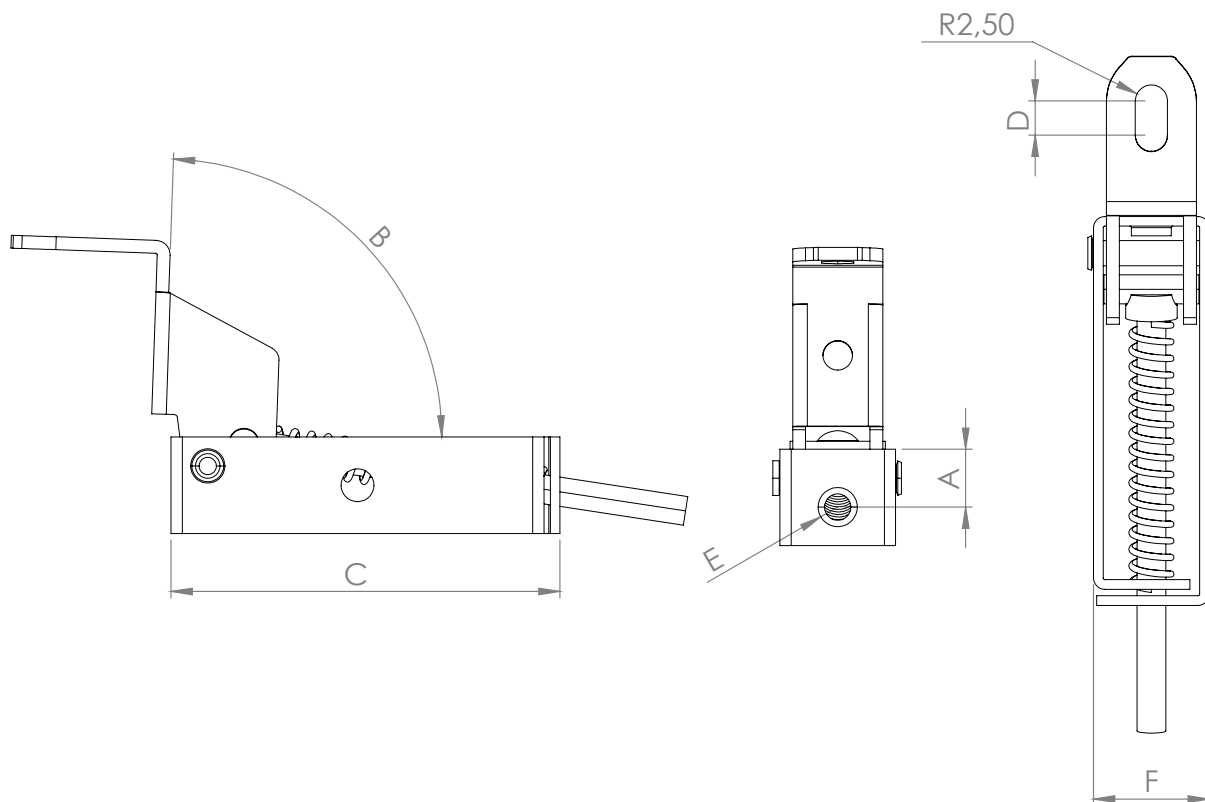


A13

A door hinge made of sheet metal from Atasan's product portfolio.

Specifications

Door Weight	from 0,6 - 3 kg
Distance from pivot point to center of gravity	120 mm
Opening angle	86°
Operation Temperature	115°C

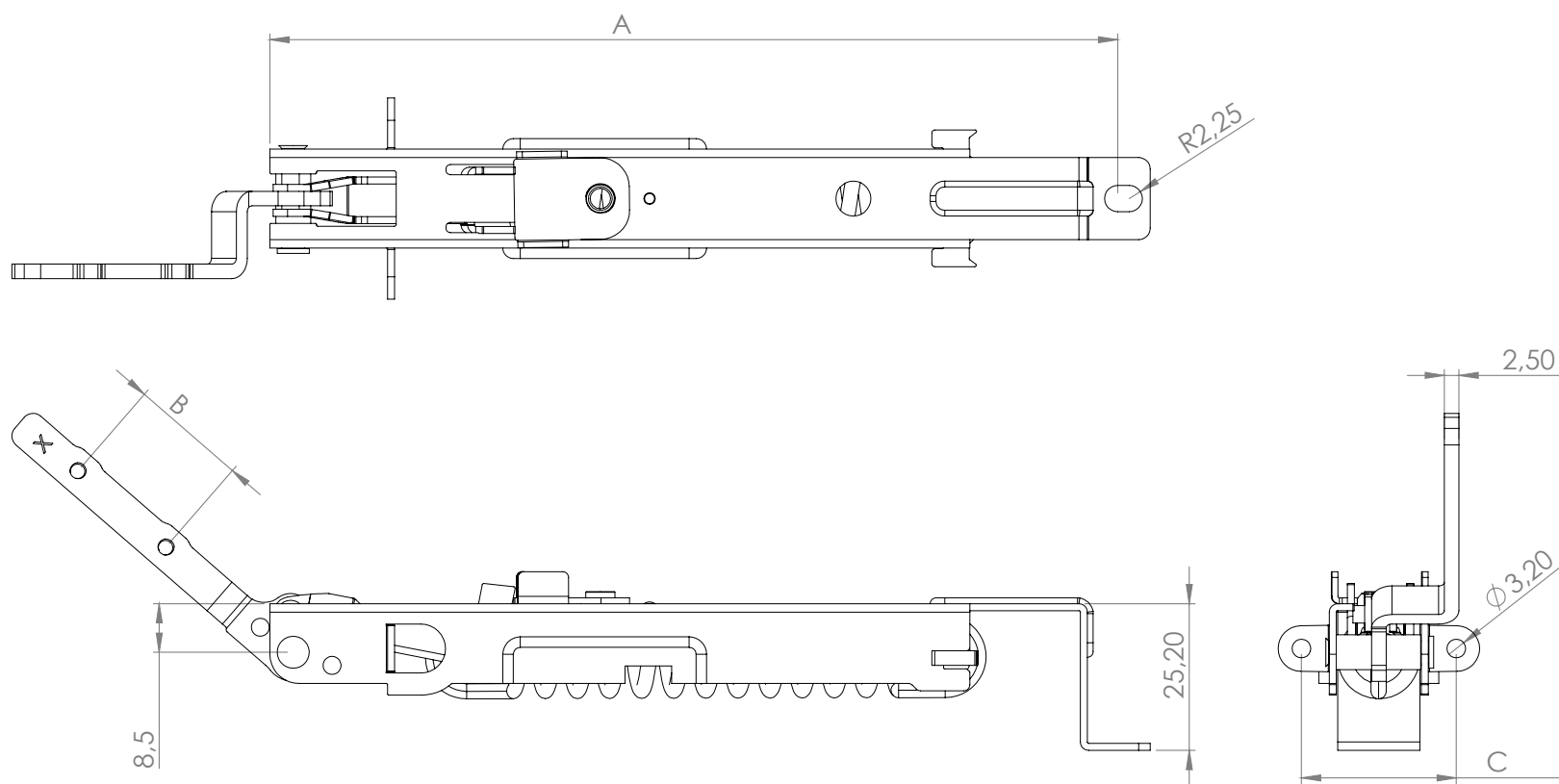


A14

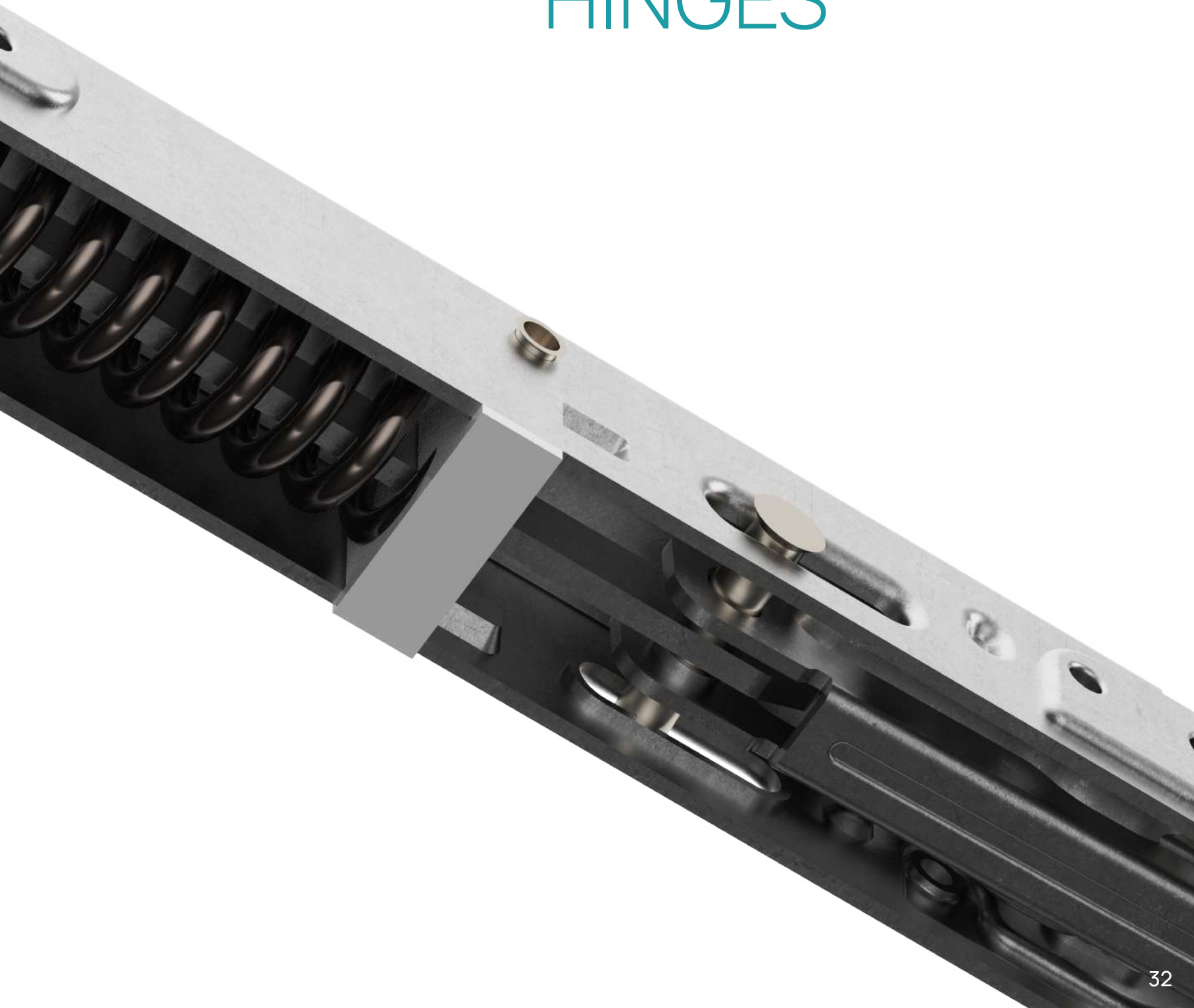
Responding the needs of mini oven doors with its small-sized design also offers a lowcost solution.

Specifications

Door Weight	from 0,6 - 3 kg
Distance from pivot point to center of gravity	120 mm
Opening angle	86°
Operation Temperature	115°C



MICROWAVE HINGES

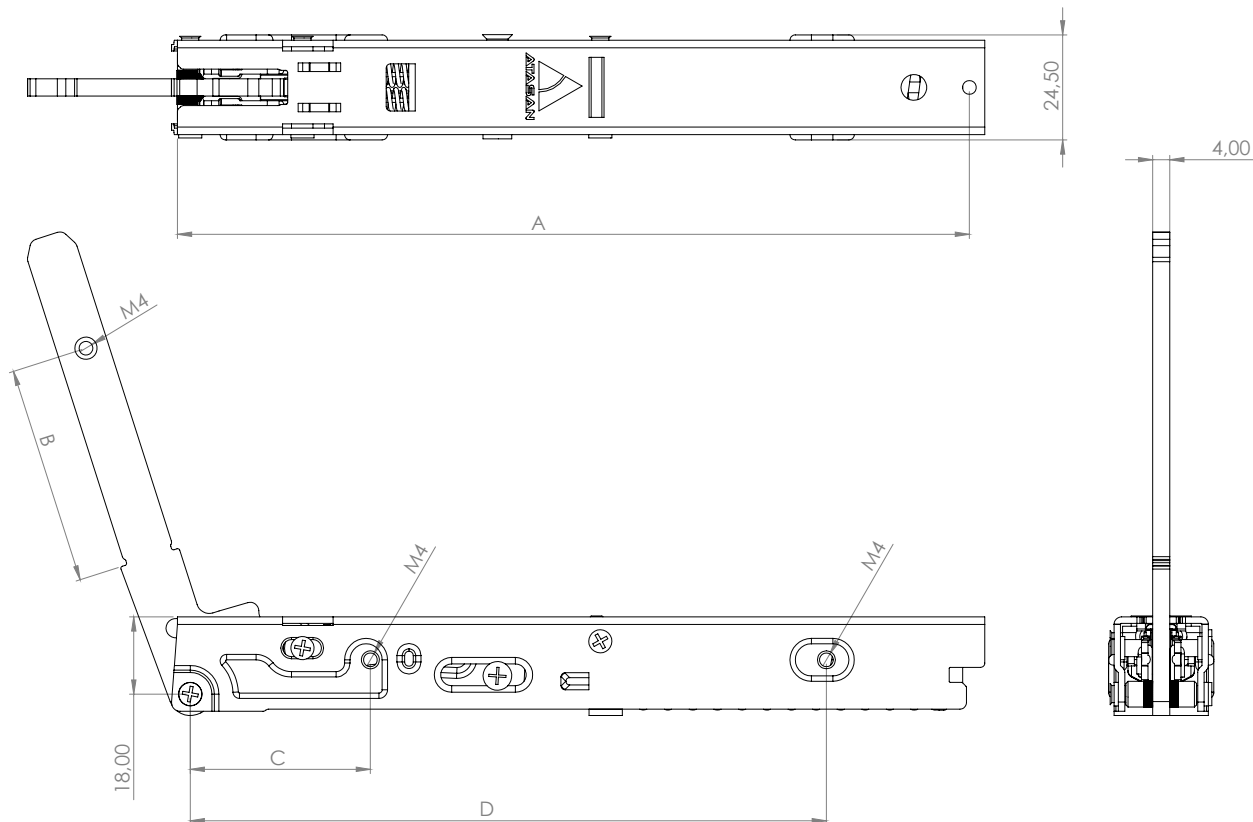


K19MW

Designed for microwave ovens, this model differs from standard hinge types with its long life cycle.

Specifications

Door Weight	from 2.5 - 12 kg
Life Cycle Test	100.000 cycles
Distance from pivot point to center of gravity	230 mm
Opening angle	86°
Operation Temperature	115°C



GLASS LID HINGES



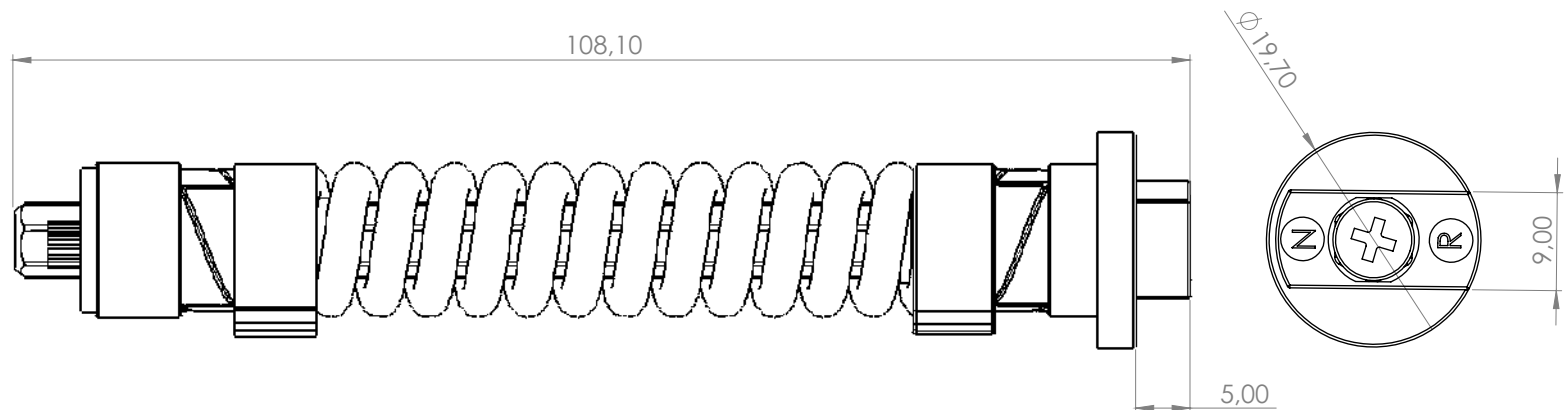
C11

A plastic body option for the upper doors of ovens.



Specifications

Door Weight	from 1.5 - 4 kg
Life Cycle Test	10.000 cycles
Distance from pivot point to center of gravity	300 mm
Operation Temperature	115°C

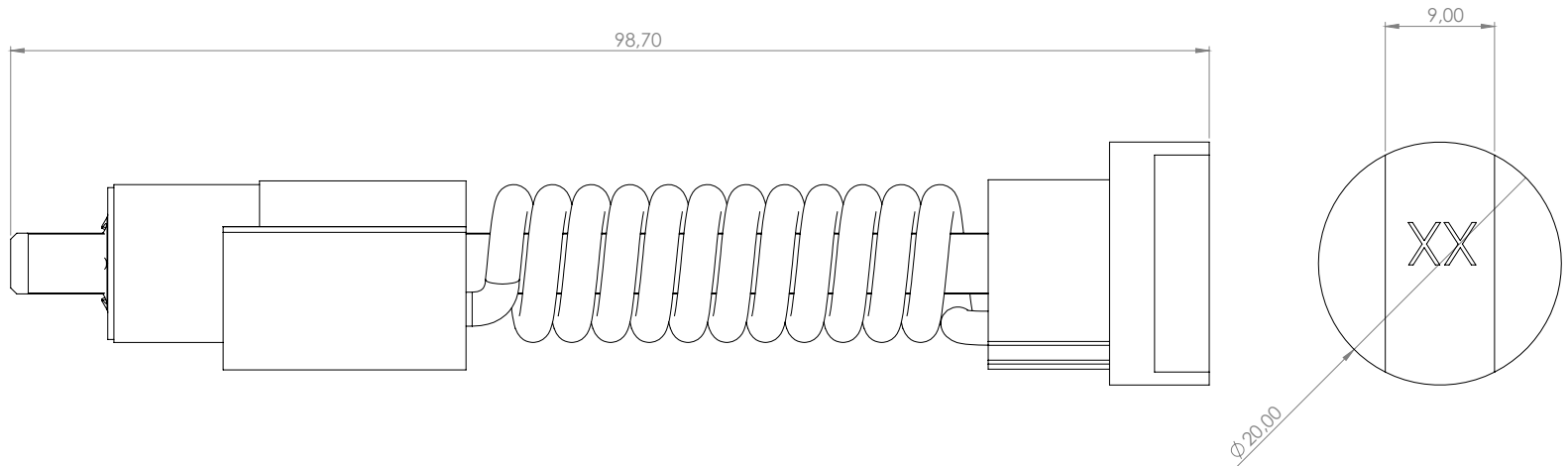


C12

An aluminum/zamak alloy body option for the upper doors of ovens.

Specifications

Door Weight	from 1.5 - 6 kg
Life Cycle Test	10.000 cycles
Distance from pivot point to center of gravity	300 mm
Operation Temperature	115°C

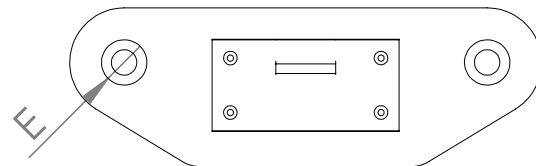
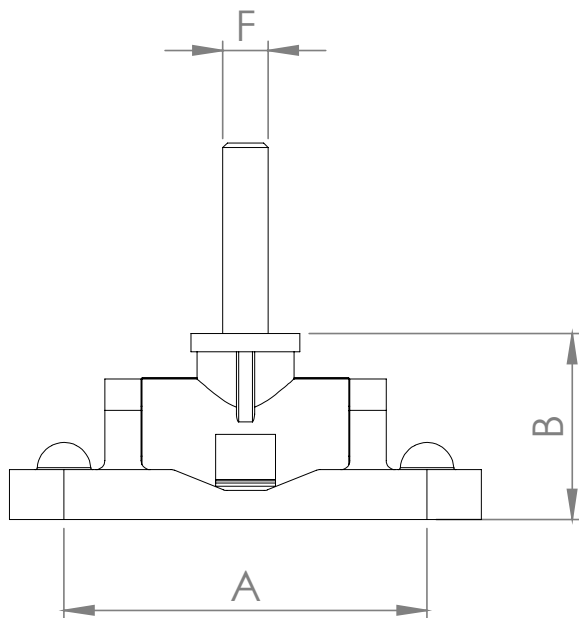


S11

An aluminum/zamak alloy body option for the upper doors of ovens.

Specifications

Door Weight	from 1 - 4 kg
Life Cycle Test	10.000 cycles
Distance from pivot point to center of gravity	300 mm
Operation Temperature	115°C



CHEST FREEZER HINGES

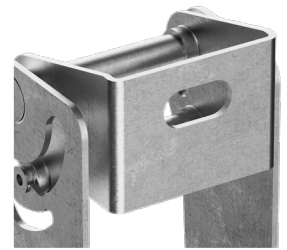
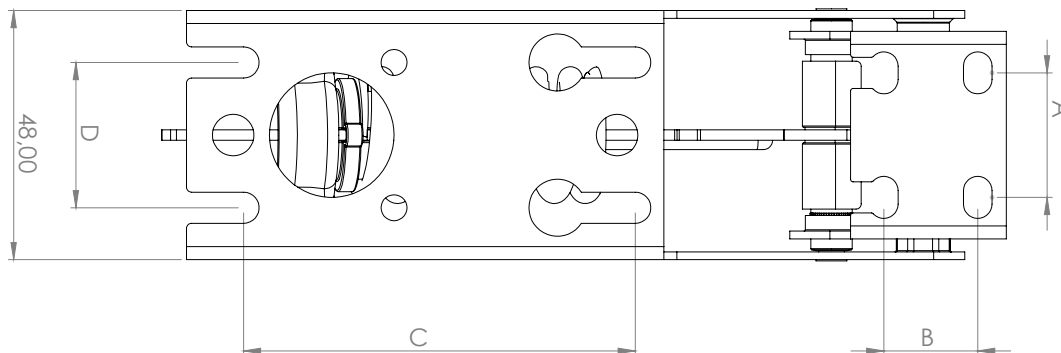
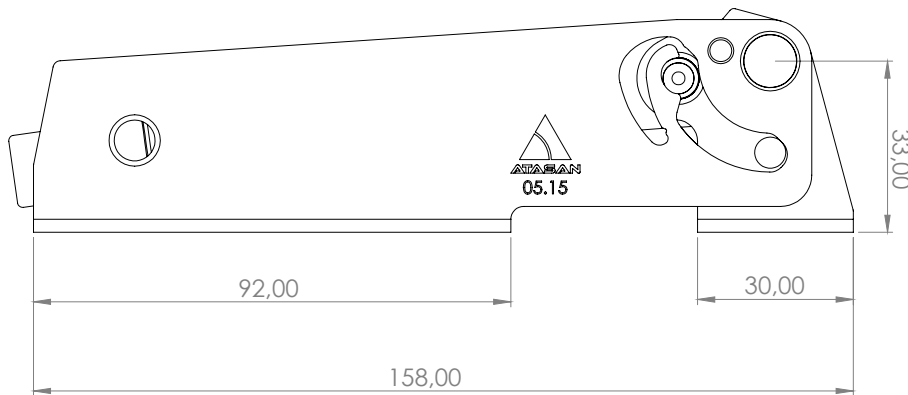


D15

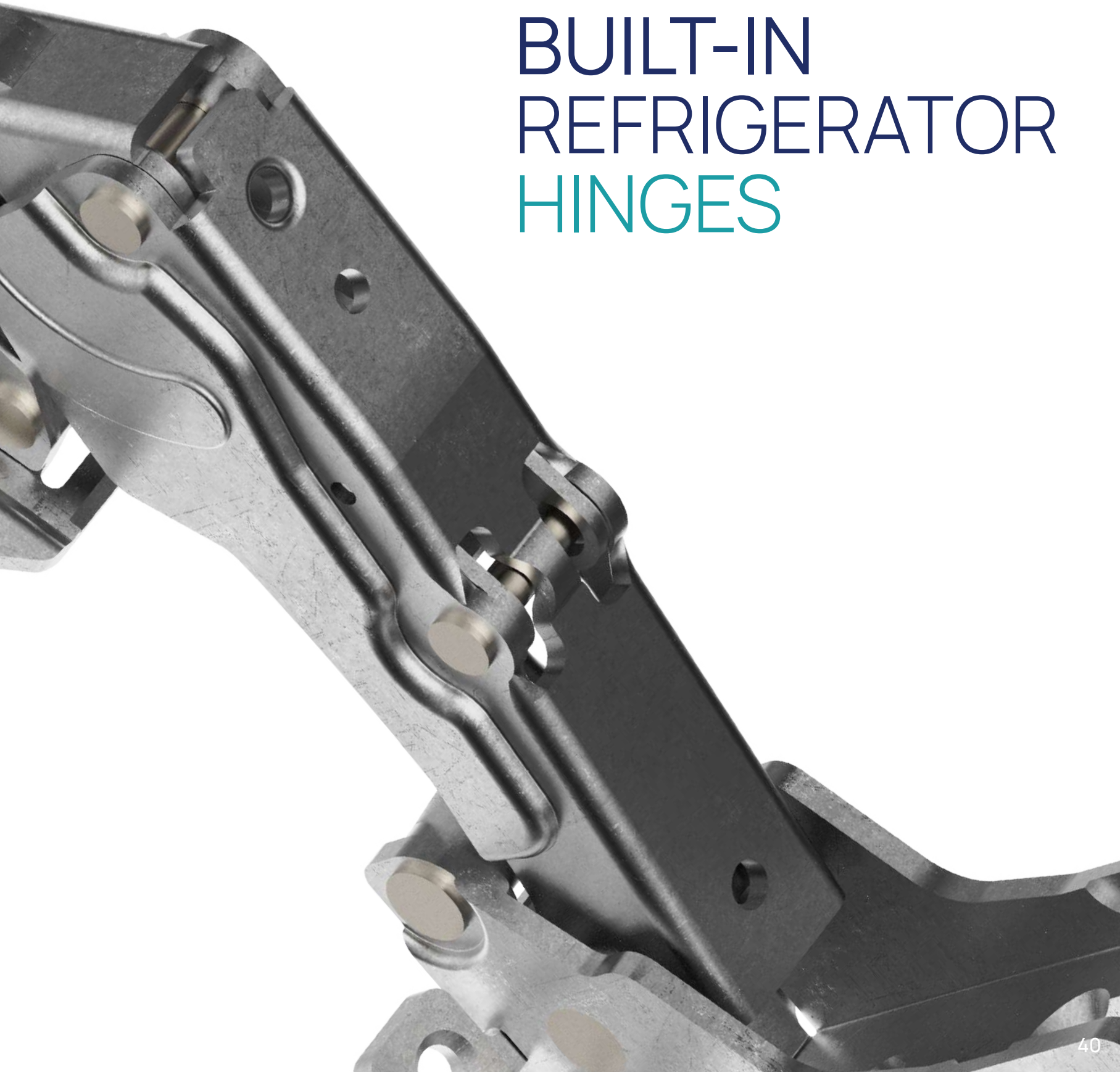
Developed for chest freezer doors with an innovative vision, this model includes easy and repeatable assembly & disassembly feature with its patented locking system and it fully meets customer's functional expectations with its friction system.

Specifications

Door Weight	max 15 kg
Life Cycle Test	30.000 - 150.000 cycle
Distance from pivot point to center of gravity	300 mm
Operation Temperature	5 - 40°C



BUILT-IN REFRIGERATOR HINGES



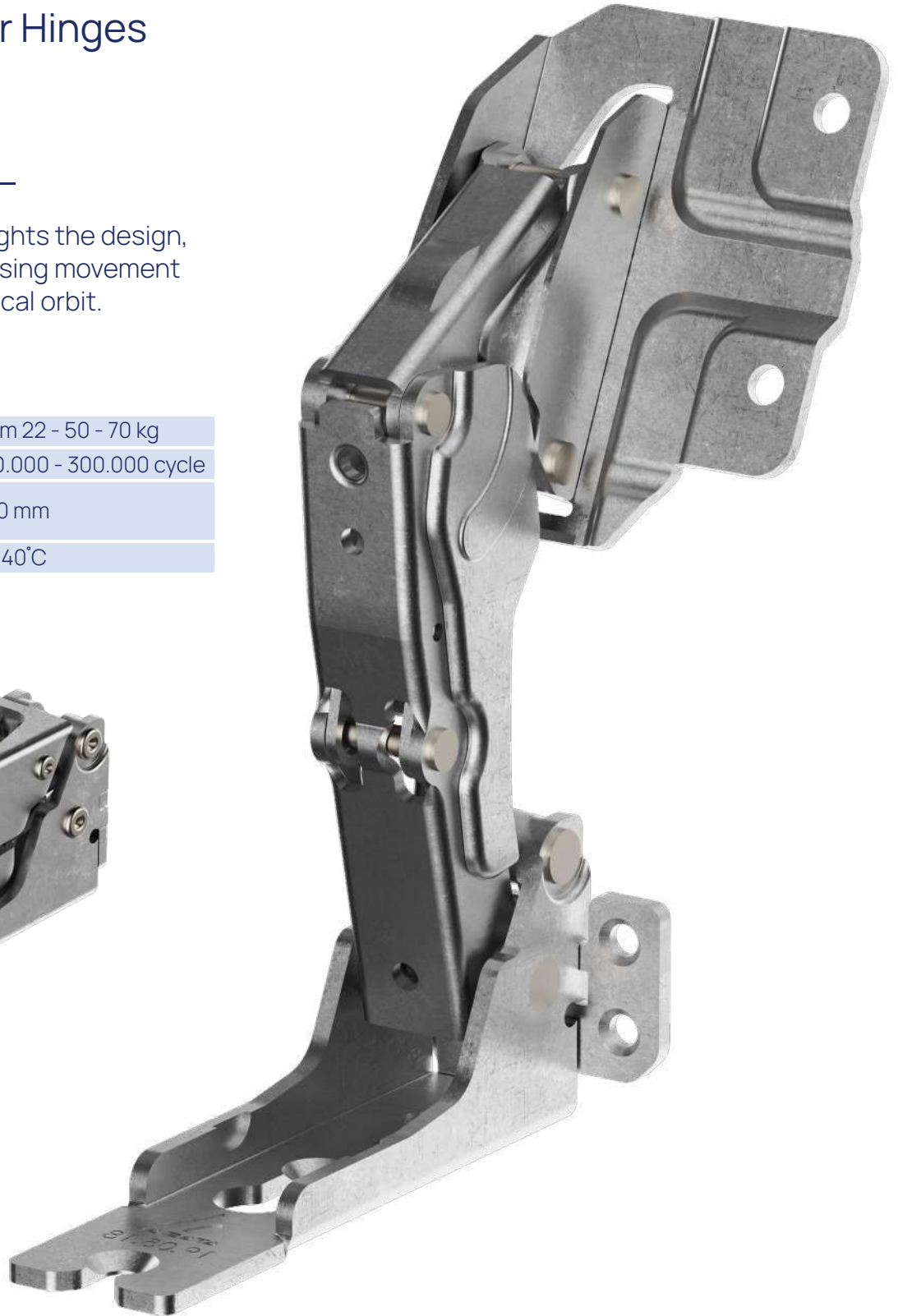
Built-in Refrigerator Hinges

B18

Besides the long life cycle that highlights the design, B18 hinges performs opening and closing movement on built-in refrigerators with an elliptical orbit.

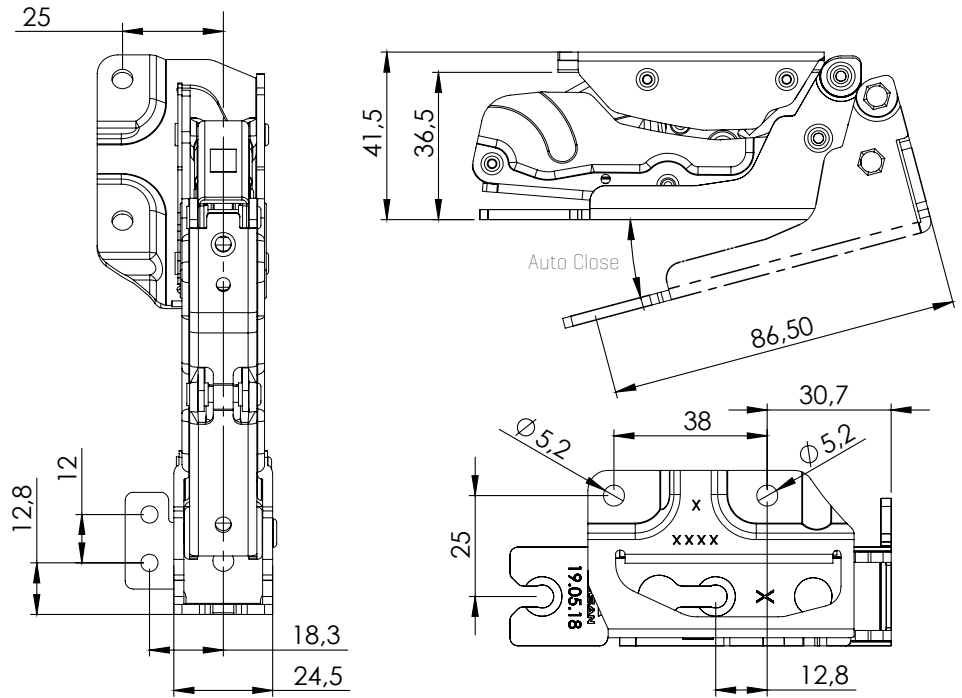
Specifications

Door Weight	from 22 - 50 - 70 kg
Life Cycle Test	100.000 - 300.000 cycle
Distance from pivot point to center of gravity	300 mm
Operation Temperature	5 - 40°C

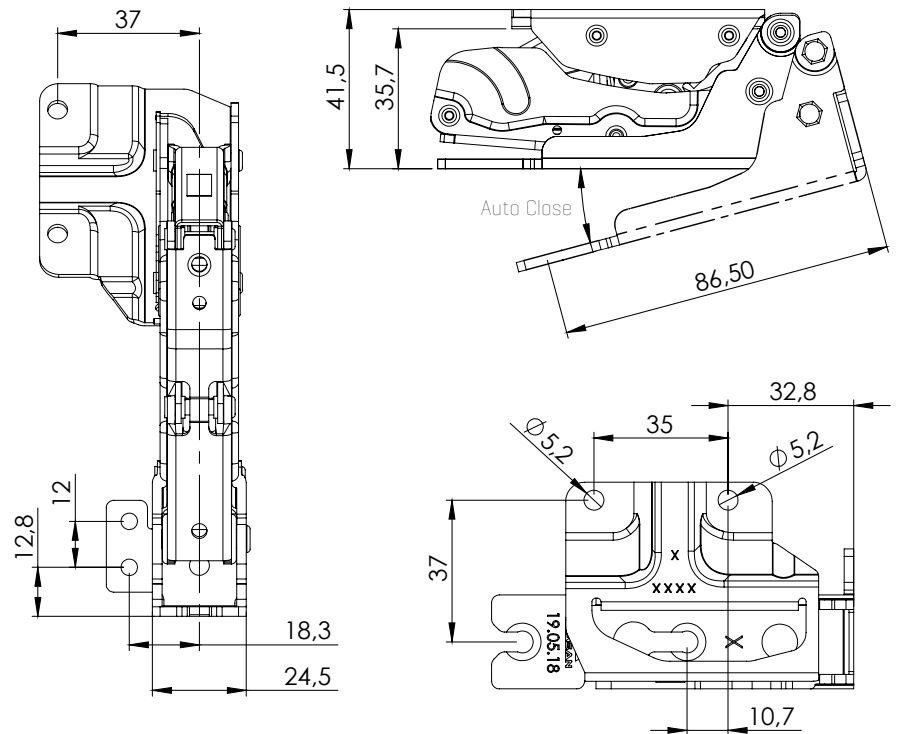


Built-in Refrigerator Hinges

Appliance door with folded metal edge, installed depth 41.5 mm



Appliance door with plastic cap, installed depth 41.5 mm



INTEGRATED WASHING MACHINE HINGES

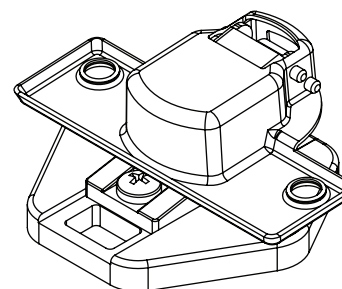
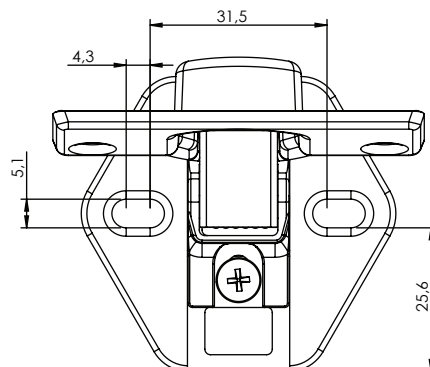
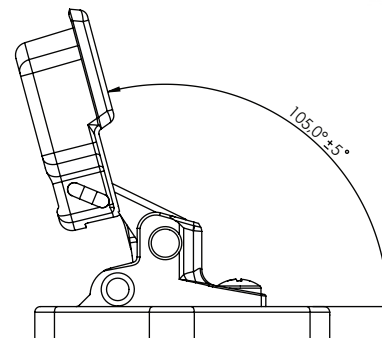
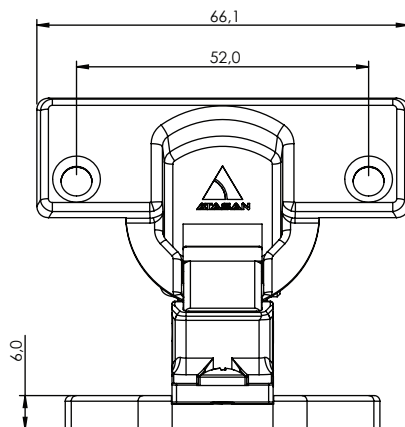
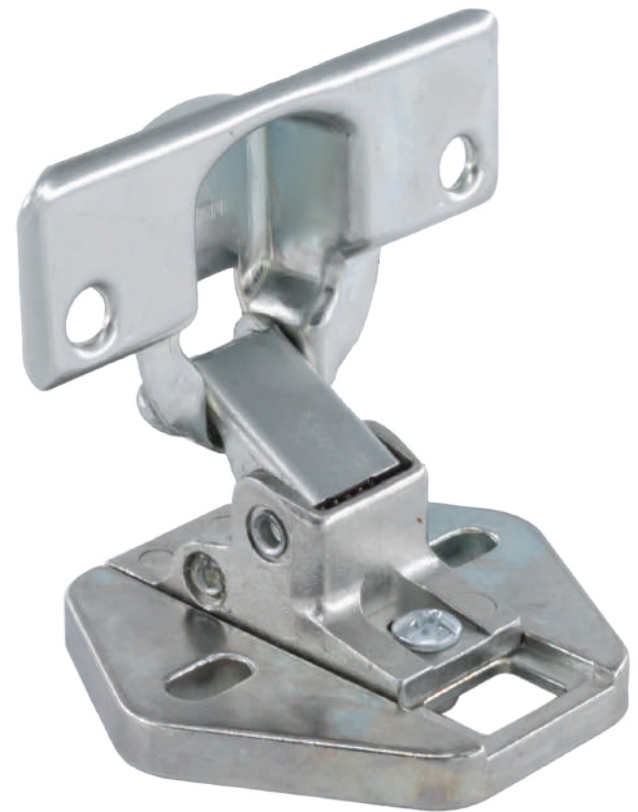


M21

It offers comfort, durability and aesthetics together with traditional design.

Specifications

Door Weight	from 1.5-12 kg
Life Cycle Test	20.000 cycle
Distance from pivot point to center of gravity	300 mm
Opening Angle	105°
Operation Temperature	115°C



COUNTER SUPPORTS

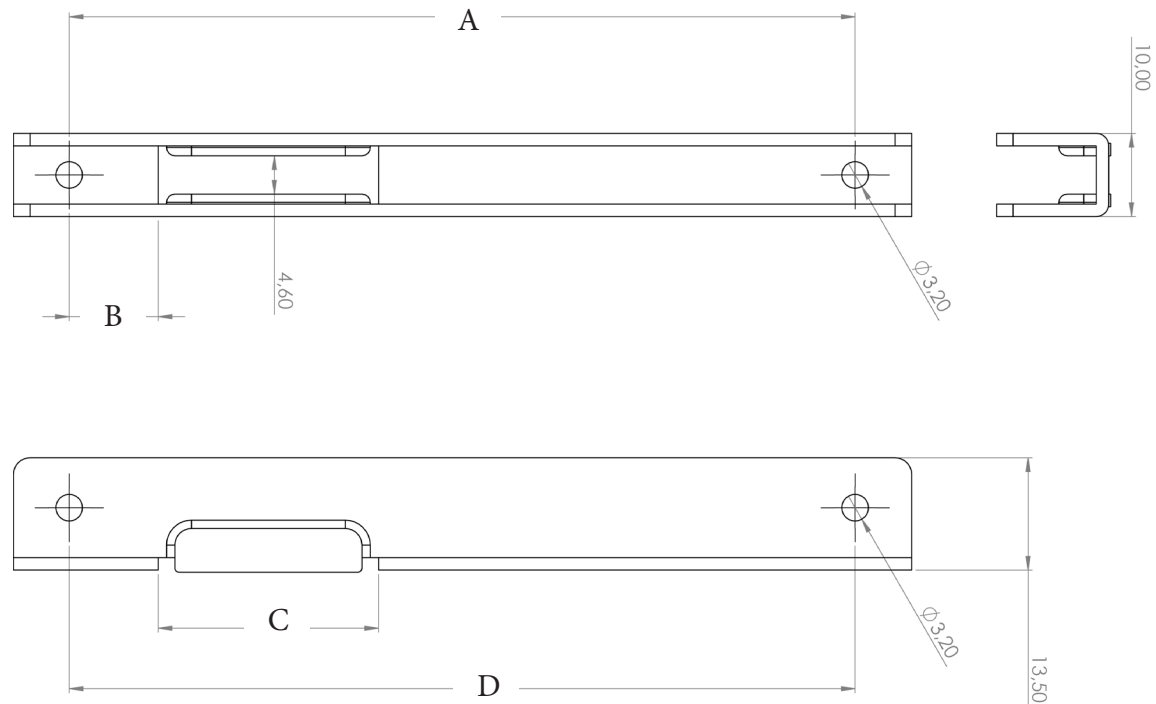


Traditional

The hinge receiver has been developed to be mounted on the side of the oven cavity, taking into account customer requests. This system ensures the proper assembly of the oven door containing the hinge arm and guarantees the door's operation without sacrificing comfort.

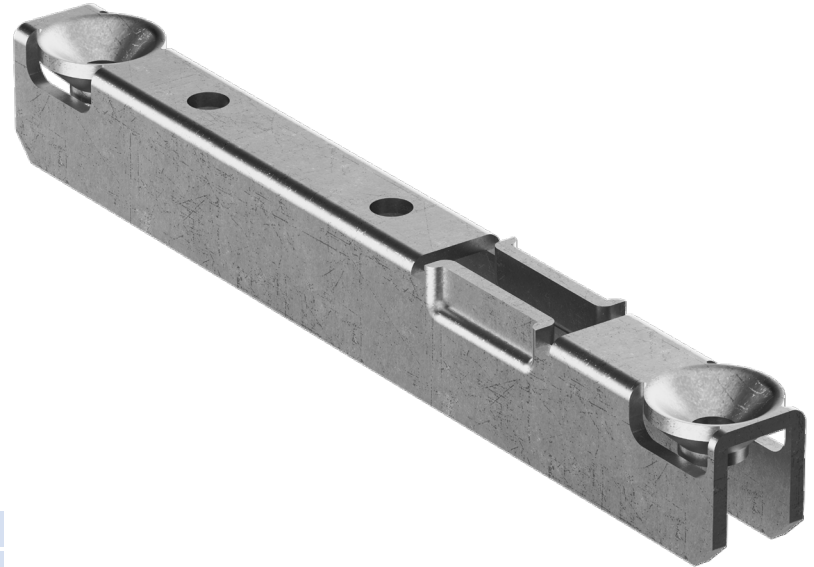
Specifications

Static Load	35 kg
Operation Temperature	max 115°C
Life Cycle Test	20.000 cycles



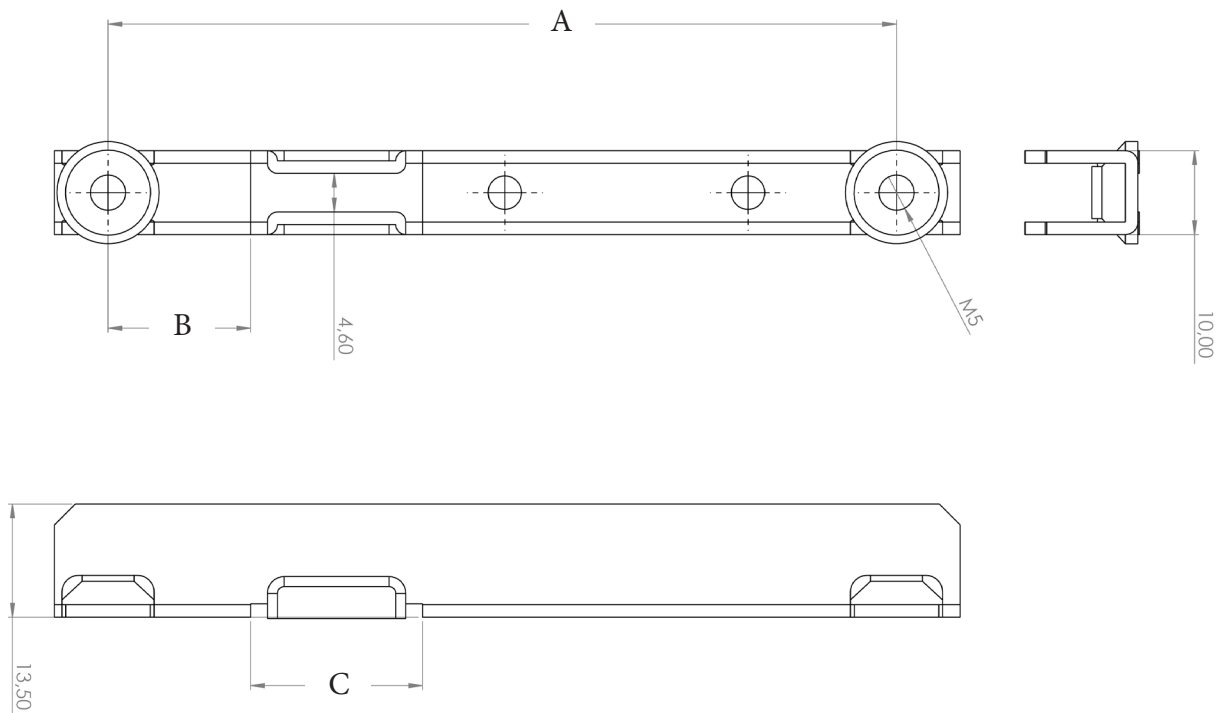
Embossed

The hinge receiver has been developed to be mounted on the side of the oven cavity, taking into account customer requests. This system ensures the proper assembly of the oven door containing the hinge arm and guarantees the door's operation without sacrificing comfort.



Specifications

Static Load	35 kg
Operation Temperature	max 115°C
Life Cycle Test	20.000 cycles

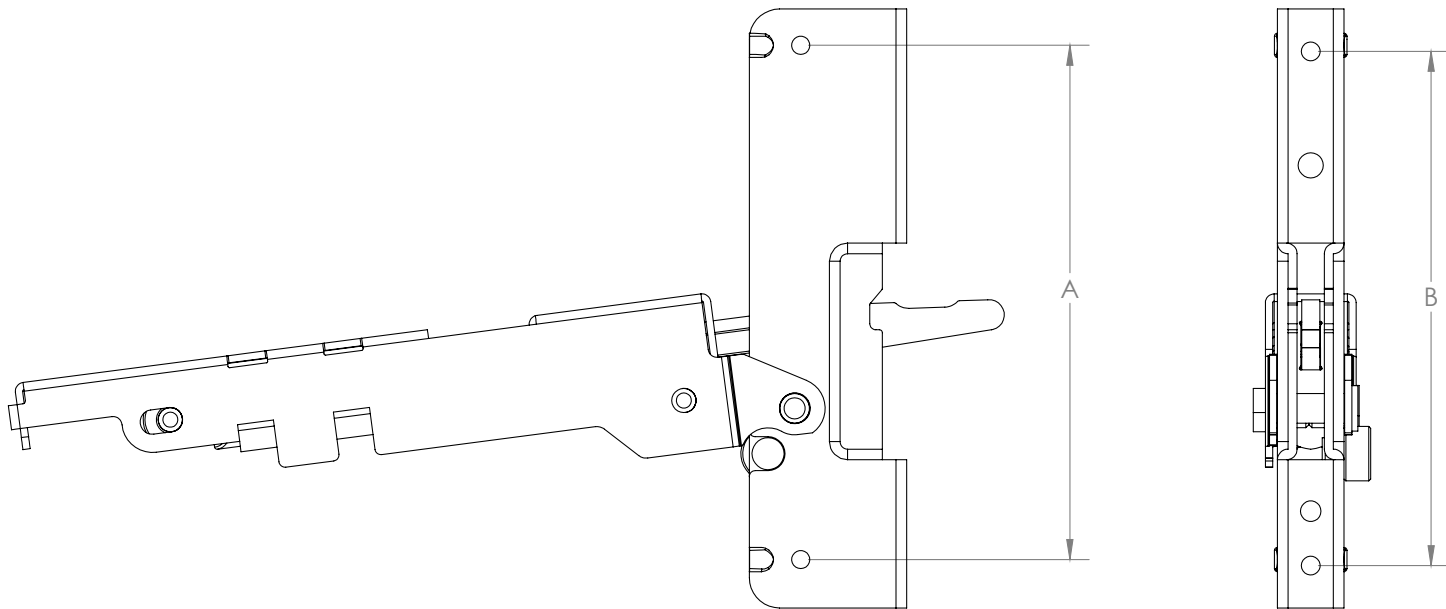


Soft

The hinge receiver has been developed to be mounted on the side of the oven cavity, taking into account customer requests. This system ensures the proper assembly of the oven door containing the hinge arm and guarantees the door's operation without sacrificing comfort.

Specifications

Static Load	35 kg
Operation Temperature	max 115°C
Life Cycle	20.000 cycle

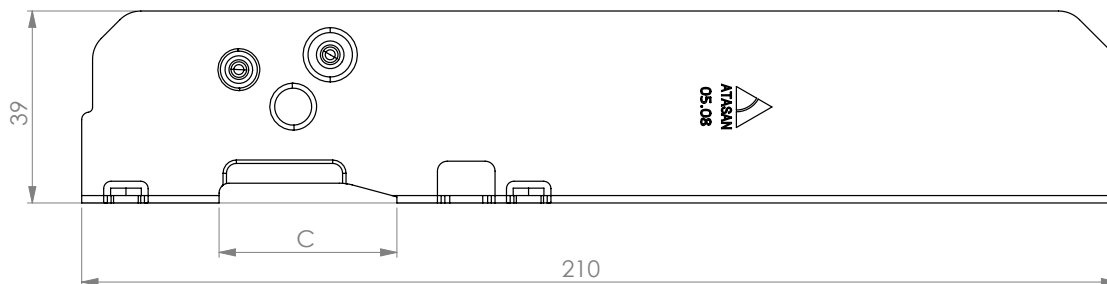
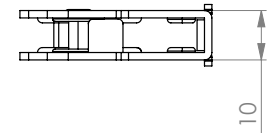
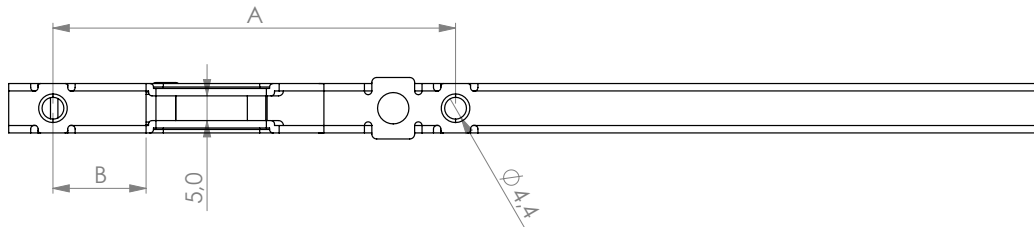


K24 Support

The hinge receiver has been developed to be mounted on the side of the oven cavity, taking into account customer requests. This system ensures the proper assembly of the oven door containing the hinge arm and guarantees the door's operation without sacrificing comfort.

Specifications

Static Load	45 kg
Operation Temperature	max 115°C
Life Cycle	40.000 cycle





Product Catalogue

1. Organize Sanayi Bölgesi Mahallesi 9.Cadde Atasan Blok No:11 54580 Arifiye SAKARYA / TÜRKİYE

+90 444 23 59

www.atasan.com